

CDC26 antibody

Product Information

Catalog No.:	FNab01524
Size:	100µg
Form:	liquid
Purification:	Immunogen affinity purified
Purity:	≥95% as determined by SDS-PAGE
Host:	Rabbit
Clonality:	polyclonal
Clone ID:	None
IsoType:	IgG
Storage:	PBS with 0.02% sodium azide and 50% glycerol pH 7.3, -20°C for 12 months(Avoid repeated freeze / thaw cycles.)

Background

Component of the anaphase promoting complex/cyclosome(APC/C), a cell cycle-regulated E3 ubiquitin ligase that controls progression through mitosis and the G1 phase of the cell cycle. The APC/C complex acts by mediating ubiquitination and subsequent degradation of target proteins: it mainly mediates the formation of 'Lys-11'-linked polyubiquitin chains and, to a lower extent, the formation of 'Lys-48'-and 'Lys-63'-linked polyubiquitin chains. May recruit the E2 ubiquitin-conjugating enzymes to the complex.

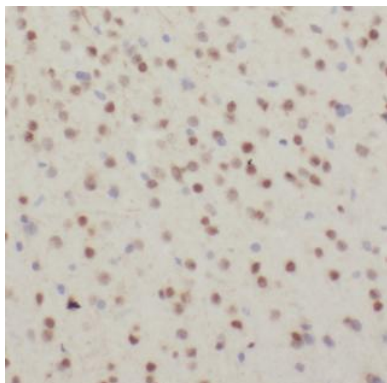
Immunogen information

Immunogen:	cell division cycle 26 homolog
Synonyms:	Anaphase-promoting complex subunit CDC26 Anaphase-promoting complex subunit 12 (APC12) Cell division cycle protein 26 homolog CDC26 ANAPC12 C9orf17
Observed MW:	10 kDa
Uniprot ID :	Q8NHZ8

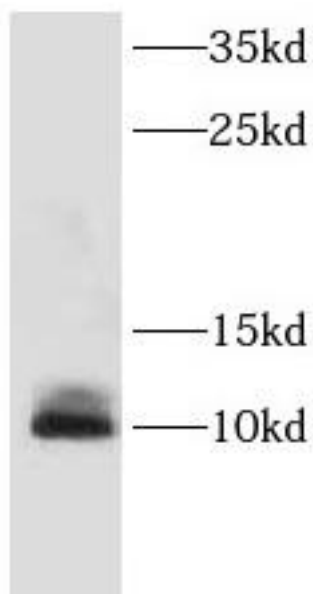
Application

Reactivity:	Human, Mouse, Rat
Tested Application:	ELISA, WB, IHC
Recommended dilution:	WB: 1:500-1:2000; IHC: 1:20-1:200

Image:



Immunohistochemistry of paraffin-embedded mouse brain tissue slide using FNab01524(CDC26 Antibody) at dilution of 1:50



HeLa cells were subjected to SDS PAGE followed by western blot with FNab01524(CDC26 Antibody) at dilution of 1:300