

## CDC25B antibody

### Product Information

Catalog No.:	FNab01522
Size:	100µg
Form:	liquid
Purification:	Immunogen affinity purified
Purity:	≥95% as determined by SDS-PAGE
Host:	Rabbit
Clonality:	polyclonal
Clone ID:	None
IsoType:	IgG
Storage:	PBS with 0.02% sodium azide and 50% glycerol pH 7.3, -20°C for 12 months(Avoid repeated freeze / thaw cycles.)

### Background

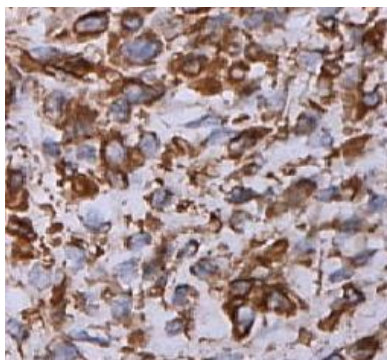
CDC25B, also named as CDC25HU2, belongs to the MPI phosphatase family. It is a tyrosine protein phosphatase which functions as a dosage-dependent inducer of mitotic progression. CDC25B directly dephosphorylates CDK1 and stimulates its kinase activity. The three isoforms seem to have a different level of activity. In Jurkat cell, this antibody recognized 2 bands: 60kd(isoform 2, CDC25B2) and 70kd(isoform 4 of CDC25B).

### Immunogen information

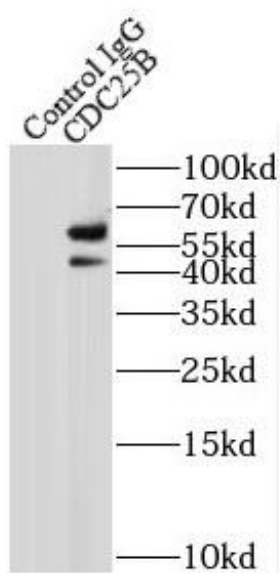
Immunogen:	cell division cycle 25 homolog B(S. pombe)
Synonyms:	M-phase inducer phosphatase 2 Dual specificity phosphatase Cdc25B CDC25B CDC25HU2
Observed MW:	60-70 kDa
Uniprot ID :	P30305

### Application

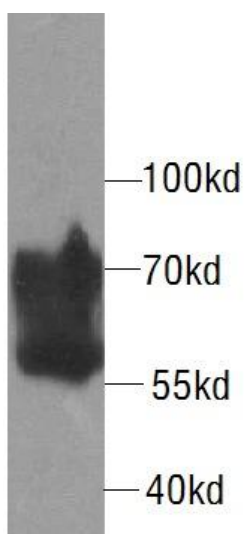
Reactivity:	Human, Mouse
Tested Application:	ELISA, WB, IHC, IP
Recommended dilution:	WB: 1:200-1:1000; IP: 1:200-1:1000; IHC: 1:20-1:200
Image:	



Immunohistochemistry of paraffin-embedded human lymphoma using FNab01522(CDC25B antibody) at dilution of 1:100



IP Result of anti-CDC25B (IP:FNab01522, 4ug; Detection:FNab01522 1:300) with mouse liver tissue lysate 4000ug.



Jurkat cells were subjected to SDS PAGE followed by western blot with FNab01522(CDC25B antibody) at dilution of 1:300