

CDC16 antibody

Product Information

Catalog No.:	FNab01517
Size:	100µg
Form:	liquid
Purification:	Immunogen affinity purified
Purity:	≥95% as determined by SDS-PAGE
Host:	Rabbit
Clonality:	polyclonal
Clone ID:	None
IsoType:	IgG
Storage:	PBS with 0.02% sodium azide and 50% glycerol pH 7.3, -20°C for 12 months(Avoid repeated freeze / thaw cycles.)

Background

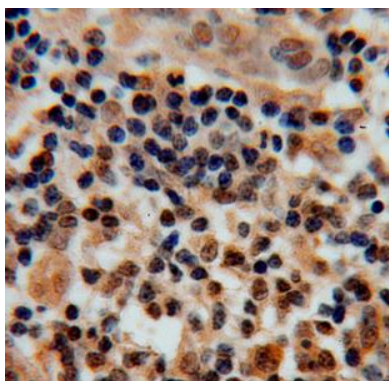
None

Immunogen information

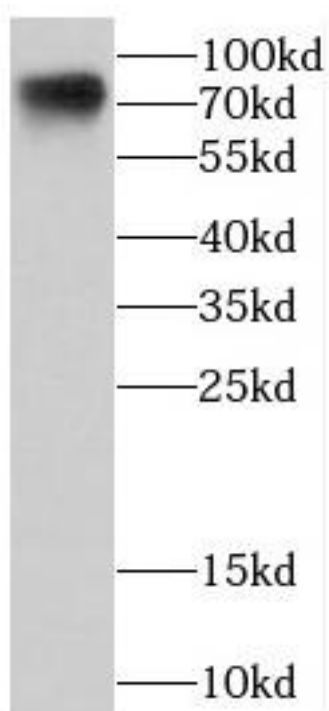
Immunogen:	cell division cycle 16 homolog
Synonyms:	Cell division cycle protein 16 homolog Anaphase-promoting complex subunit 6 (APC6) CDC16 homolog (CDC16Hs) Cyclosome subunit 6 CDC16 ANAPC6
Observed MW:	72 kDa
Uniprot ID :	Q13042

Application

Reactivity:	Human, Mouse, Rat
Tested Application:	ELISA, WB, IHC, IF
Recommended dilution:	WB: 1:500-1:2000; IHC: 1:20-1:200; IF: 1:20-1:200
Image:	



Immunohistochemistry of paraffin-embedded human cervical cancer using FNab01517(CDC16 antibody) at dilution of 1:50



Jurkat cells were subjected to SDS PAGE followed by western blot with FNab01517(CDC16 antibody) at dilution of 1:500