

CD46 antibody

Product Information

Catalog No.:	FNab01485
Size:	100µg
Form:	liquid
Purification:	Immunogen affinity purified
Purity:	≥95% as determined by SDS-PAGE
Host:	Rabbit
Clonality:	polyclonal
Clone ID:	None
IsoType:	IgG
Storage:	PBS with 0.02% sodium azide and 50% glycerol pH 7.3, -20°C for 12 months(Avoid repeated freeze / thaw cycles.)

Background

Acts as a cofactor for complement factor I, a serine protease which protects autologous cells against complement-mediated injury by cleaving C3b and C4b deposited on host tissue. May be involved in the fusion of the spermatozoa with the oocyte during fertilization. Also acts as a costimulatory factor for T-cells which induces the differentiation of CD4⁺ into T-regulatory 1 cells. T-regulatory 1 cells suppress immune responses by secreting interleukin-10, and therefore are thought to prevent autoimmunity. (Microbial infection) A number of viral and bacterial pathogens seem to bind MCP in order to exploit its immune regulation property and directly induce an immunosuppressive phenotype in T-cells. Acts as a receptor for adenovirus subgroup B2 and Ad3, cultured measles virus and herpesvirus 6(PubMed:10972291, PubMed:12663806, PubMed:12724329, PubMed:12915534, PubMed:14566335, PubMed:15047806, PubMed:15078926, PubMed:15919905, PubMed:16254377). May act as a receptor for pathogenic bacteria Neisseria and Streptococcus pyogenes(PubMed:7708671, PubMed:9379894, PubMed:11260136, PubMed:11971006).

Immunogen information

Immunogen:	CD46 molecule, complement regulatory protein
Synonyms:	Membrane cofactor protein TLX Trophoblast leukocyte common antigen CD46 MCP MIC10
Observed MW:	50-56 kDa
Uniprot ID :	P15529

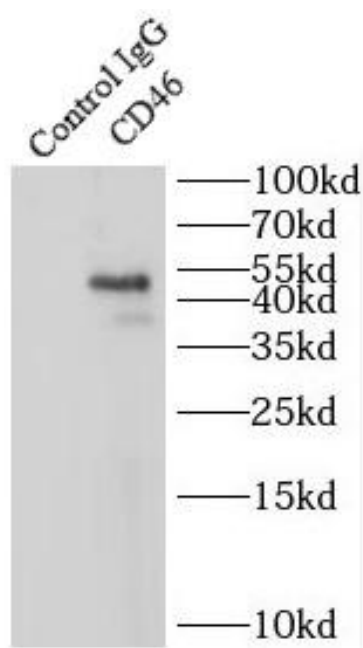
Application

Reactivity: Human, Mouse

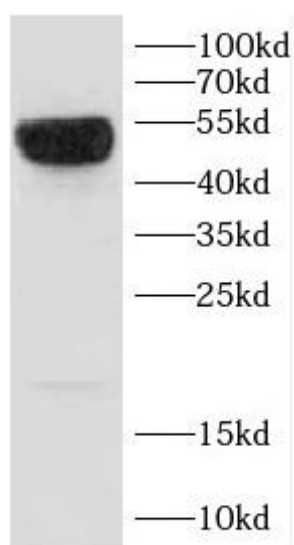
Tested Application: ELISA, WB, IP

Recommended dilution: WB: 1:500-1:1000; IP: 1:200-1:1000

Image:



IP Result of anti-CD46 (IP:FNab01485, 4ug;
Detection:FNab01485 1:1000) with A549 cells
lysate 1800ug.



A549 cells were subjected to SDS PAGE followed
by western blot with FNab01485(CD46 antibody)
at dilution of 1:400