

CD300LG antibody

Product Information

Catalog No.:	FNab01462
Size:	100µg
Form:	liquid
Purification:	Immunogen affinity purified
Purity:	≥95% as determined by SDS-PAGE
Host:	Rabbit
Clonality:	polyclonal
Clone ID:	None
IsoType:	IgG
Storage:	PBS with 0.02% sodium azide and 50% glycerol pH 7.3, -20°C for 12 months(Avoid repeated freeze / thaw cycles.)

Background

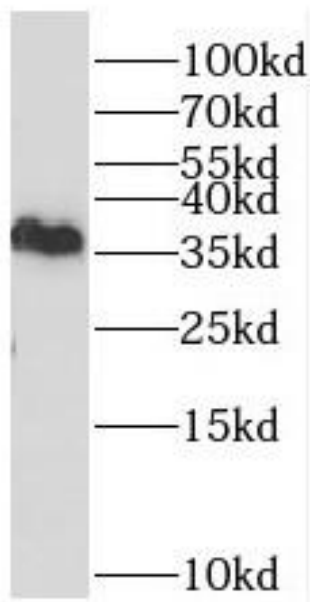
Receptor which may mediate L-selectin-dependent lymphocyte rollings. Binds SELL in a calcium dependent manner. Binds lymphocyte(By similarity).

Immunogen information

Immunogen:	CD300 molecule-like family member g
Synonyms:	CMRF35-like molecule 9 (CLM-9) CD300 antigen-like family member G Triggering receptor expressed on myeloid cells 4 (TREM-4) CD300LG CLM9 TREM4
Observed MW:	36 kDa
Uniprot ID :	Q6UXG3

Application

Reactivity:	Human
Tested Application:	ELISA, WB
Recommended dilution:WB:	1:500-1:2000
Image:	



human kidney tissue were subjected to SDS PAGE followed by western blot with FNab01462(CD300LG antibody) at dilution of 1:500