

## MCAM antibody

### Product Information

Catalog No.:	FNab01429
Size:	100µg
Form:	liquid
Purification:	Protein A+G purification
Purity:	≥95% as determined by SDS-PAGE
Host:	Mouse
Clonality:	monoclonal
Clone ID:	0E4
IsoType:	IgG1
Storage:	PBS with 0.02% sodium azide and 50% glycerol pH 7.3, -20°C for 12 months(Avoid repeated freeze / thaw cycles.)

### Background

CD146, also known as melanoma cell adhesion molecule(MCAM) or MUC18, originally identified as a biomarker of melanoma progression, is a transmembrane glycoprotein belonging to the immunoglobulin(Ig) superfamily(PMID: 8378324). Structurally, it consists of five Ig domains, a transmembrane domain, and a cytoplasmic region. In normal adult tissue, CD146 is primarily expressed by vascular endothelium and smooth muscle. CD146 is a key cell adhesion protein in vascular endothelial cell activity and angiogenesis, and has been used as marker of circulating endothelium cells(CECs)(PMID: 19356677).

### Immunogen information

Immunogen:	melanoma cell adhesion molecule
Synonyms:	Cell surface glycoprotein MUC18 Cell surface glycoprotein P1H12 Melanoma cell adhesion molecule Melanoma-associated antigen A32 Melanoma-associated antigen MUC18 S-endo 1 endothelial-associated antigen MCAM MUC18
Observed MW:	113-120 kDa
Uniprot ID :	P43121

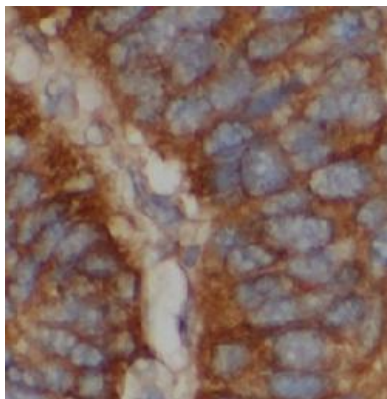
### Application

Reactivity:	Human
-------------	-------

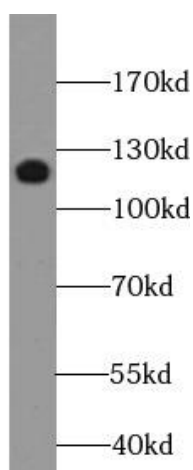
Tested Application: ELISA, WB, IHC, FC

Recommended dilution: WB: 1:500-1:5000; IHC: 1:20-1:200

Image:



Immunohistochemistry of paraffin-embedded human liver cancer tissue slide using FNab01429(CD146, MCAM Antibody) at dilution of 1:20



A375 cells were subjected to SDS PAGE followed by western blot with FNab01429(CD146, MCAM antibody) at dilution of 1:1000