

anti- CD138/Syndecan-1 antibody

Product Information

Catalog No.:	FNab01423
Size:	100µg
Form:	liquid
Purification:	Immunogen affinity purified
Purity:	≥95% as determined by SDS-PAGE
Host:	Rabbit
Clonality:	polyclonal
IsoType:	IgG
Storage:	PBS with 0.02% sodium azide and 50% glycerol pH 7.3, -20°C for 12 months (Avoid repeated freeze / thaw cycles.)

Background

The protein encoded by this gene is a transmembrane (type I) heparan sulfate proteoglycan and is a member of the syndecan proteoglycan family. The syndecans mediate cell binding, cell signaling, and cytoskeletal organization and syndecan receptors are required for internalization of the HIV-1 tat protein. The syndecan-1 protein functions as an integral membrane protein and participates in cell proliferation, cell migration and cell-matrix interactions via its receptor for extracellular matrix proteins. Altered syndecan-1 expression has been detected in several different tumor types. While several transcript variants may exist for this gene, the full-length nature of only two have been described to date. These two represent the major variants of this gene and encode the same protein.

Immunogen information

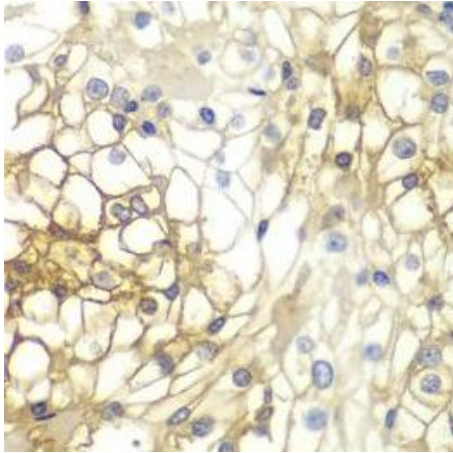
Immunogen:	syndecan 1
Synonyms:	CD138, SDC, SYND1, syndecan
Observed MW:	32 kDa, 85-120 kDa
Uniprot ID :	P18827

Application

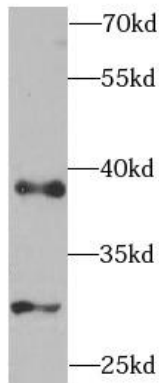
Reactivity:	Human, Mouse
Tested Application:	ELISA, WB, IHC
Recommended dilution:	WB: 1:500 - 1:2000; IHC: 1:50 - 1:200
Image:	

Wuhan Fine Biotech Co., Ltd.

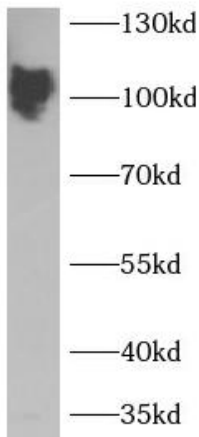
B9 Bld, High-Tech Medical Devices Park, No. 818 Gaoxin Ave. East Lake High-Tech Development Zone. Wuhan, Hubei, China(430206)



Immunohistochemistry of paraffin-embedded human kidney cancer slide using FNab01423(SDC1, CD138 Antibody) at dilution of 1:200



MCF7 cells were subjected to SDS PAGE followed by western blot with FNab01423(SDC1, CD138 antibody) at dilution of 1:1000



Mouse heart were subjected to SDS PAGE followed by western blot with FNab01423(SDC1, CD138 antibody) at dilution of 1:1000