

## CCS antibody

### Product Information

|               |  |
|---------------|--|
| Catalog No.:  | FNab01395  |
| Size:         | 100µg  |
| Form:         | liquid   |
| Purification: | Immunogen affinity purified  |
| Purity:       | ≥95% as determined by SDS-PAGE   |
| Host:         | Rabbit   |
| Clonality:    | polyclonal   |
| Clone ID:     | None   |
| IsoType:      | IgG  |
| Storage:      | PBS with 0.02% sodium azide and 50% glycerol pH 7.3, -20°C for 12 months(Avoid repeated freeze / thaw cycles.) |

### Background

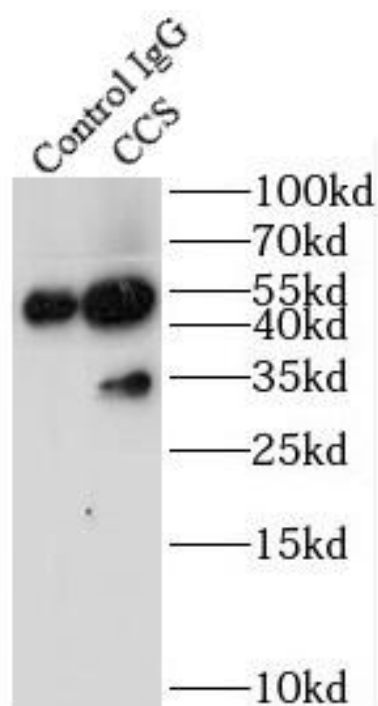
Delivers copper to copper zinc superoxide dismutase(SOD1).

### Immunogen information

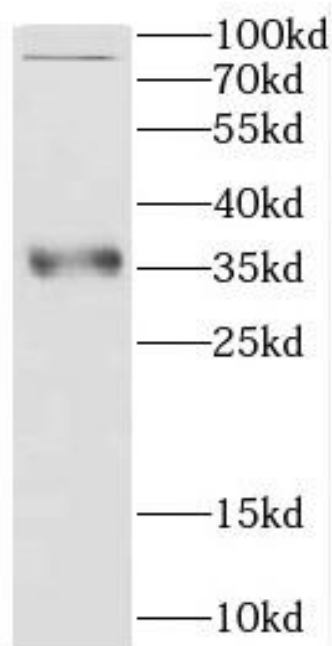
|              |   |
|--------------|---|
| Immunogen:   | copper chaperone for superoxide dismutase   |
| Synonyms:    | Copper chaperone for superoxide dismutase Superoxide dismutase copper chaperone CCS |
| Observed MW: | 34 kDa, 84 kDa  |
| Uniprot ID : | O14618  |

### Application

|                       |                                    |
|-----------------------|------------------------------------|
| Reactivity:           | Human                              |
| Tested Application:   | ELISA, WB, IP                      |
| Recommended dilution: | WB: 1:500-1:1000; IP: 1:200-1:1000 |
| Image:                |                                    |



IP Result of anti-CCS (IP:FNab01395, 3ug;  
Detection:FNab01395 1:1000) with HepG2 cells  
lysate 6000ug.



HepG2 cells were subjected to SDS PAGE  
followed by western blot with FNab01395(CCS  
antibody) at dilution of 1:1000