

HAUS1 antibody

Product Information

| | |
|---------------|--|
| Catalog No.: | FNab01358 |
| Size: | 100µg |
| Form: | liquid |
| Purification: | Immunogen affinity purified |
| Purity: | ≥95% as determined by SDS-PAGE |
| Host: | Rabbit |
| Clonality: | polyclonal |
| Clone ID: | None |
| IsoType: | IgG |
| Storage: | PBS with 0.02% sodium azide and 50% glycerol pH 7.3, -20°C for 12 months(Avoid repeated freeze / thaw cycles.) |

Background

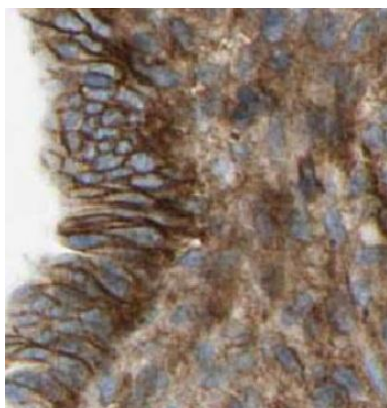
None

Immunogen information

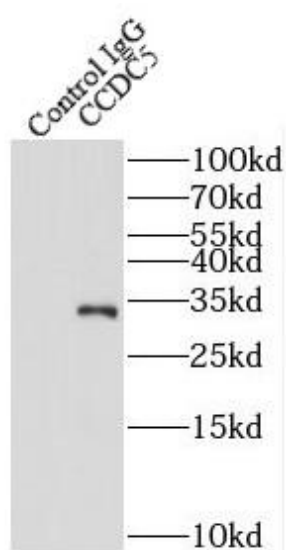
| | |
|--------------|--|
| Immunogen: | coiled-coil domain containing 5(spindle associated) |
| Synonyms: | HAUS augmin-like complex subunit 1 Coiled-coil domain-containing protein 5 Enhancer of invasion-cluster (HEI-C) HAUS1 CCDC5 HEIC |
| Observed MW: | 40 kDa |
| Uniprot ID : | Q96CS2 |

Application

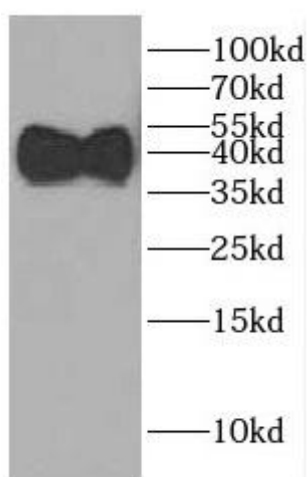
| | |
|-----------------------|---|
| Reactivity: | Human, Mouse, Rat |
| Tested Application: | ELISA, WB, IHC, IP |
| Recommended dilution: | WB: 1:500-1:2000; IP: 1:500-1:1000; IHC: 1:50-1:200 |
| Image: | |



Immunohistochemistry of paraffin-embedded human pancreas cancer using FNab01358(CCDC5 antibody) at dilution of 1:50



IP Result of anti-CCDC5 (IP:FNab01358, 4ug; Detection:FNab01358 1:500) with HeLa cells lysate 1200ug.



human skeletal muscle tissue were subjected to SDS PAGE followed by western blot with FNab01358(CCDC5 antibody) at dilution of 1:500