

CBFA2T2 antibody

Product Information

Catalog No.:	FNab01315
Size:	100μg
Form:	liquid
Purification:	Immunogen affinity purified
Purity:	≥95% as determined by SDS-PAGE
Host:	Rabbit
Clonality:	polyclonal
Clone ID:	None
IsoType:	IgG
Storage:	PBS with 0.02% sodium azide and 50% glycerol pH 7.3, -20°C for 12 months(Avoid repeated freeze / thaw cycles.)

Background

Transcriptional corepressor which facilitates transcriptional repression via its association with DNA-binding transcription factors and recruitment of other corepressors and histone-modifying enzymes(PubMed:12559562, PubMed:15203199). Via association with PRDM14 is involved in regulation of embryonic stem cell(ESC) pluripotency(PubMed:27281218). Involved in primordial germ cell(PCG) formation. Stabilizes PRDM14 and OCT4 on chromatin in a homooligomerization-dependent manner(By similarity). Can repress the expression of MMP7 in a ZBTB33-dependent manner(PubMed:23251453). May function as a complex with the chimeric protein RUNX1/AML1-CBFA2T1/MTG8(AML1-MTG8/ETO fusion protein) which is produced in acute myeloid leukemia with the chromosomal translocation t(8;21). May thus be involved in the repression of AML1-dependent transcription and the induction of G-CSF/CSF3-dependent cell growth. May be a tumor suppressor gene candidate involved in myeloid tumors with the deletion of the 20q11 region. Through heteromerization with CBFA2T3/MTG16 may be involved in regulation of the proliferation and the differentiation of erythroid progenitors by repressing the expression of TAL1 target genes(By similarity). Required for the maintenance of the secretory cell lineage in the small intestine. Can inhibit Notch signaling probably by association with RBPJ and may be involved in GFI1-mediated Paneth cell differentiation(By similarity).

Immunogen information

Immunogen: core-binding factor, runt domain, alpha subunit 2; translocated to, 2

Synonyms:	Protein CBFA2T2 ETO homologous on chromosome 20 MTG8-like protein MTG8-related protein 1 Myeloid translocation-related protein 1 p85 CBFA2T2 EHT MTGR1
Observed MW:	85 kDa
Uniprot ID :	O43439

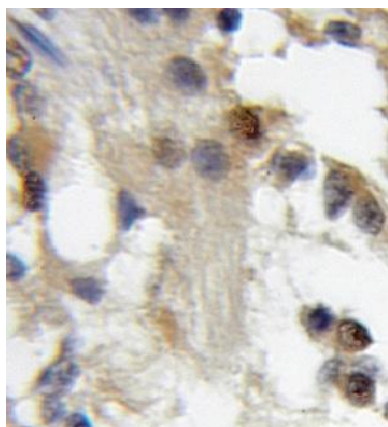
Application

Reactivity: Human, Mouse, Rat

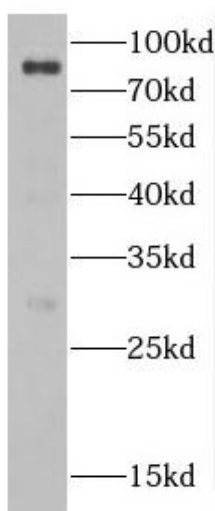
Tested Application: ELISA, WB, IHC

Recommended dilution: WB: 1:500-1:2000; IHC: 1:20-1:200

Image:



Immunohistochemistry of paraffin-embedded human gliomas using FNab01315(CBFA2T2 antibody) at dilution of 1:50



HEK-293 cells were subjected to SDS PAGE followed by western blot with FNab01315(CBFA2T2 antibody) at dilution of 1:300