

CTSA antibody

Product Information

Catalog No.:	FNab01303
Size:	100µg
Form:	liquid
Purification:	Immunogen affinity purified
Purity:	≥95% as determined by SDS-PAGE
Host:	Rabbit
Clonality:	polyclonal
Clone ID:	None
IsoType:	IgG
Storage:	PBS with 0.02% sodium azide and 50% glycerol pH 7.3, -20°C for 12 months(Avoid repeated freeze / thaw cycles.)

Background

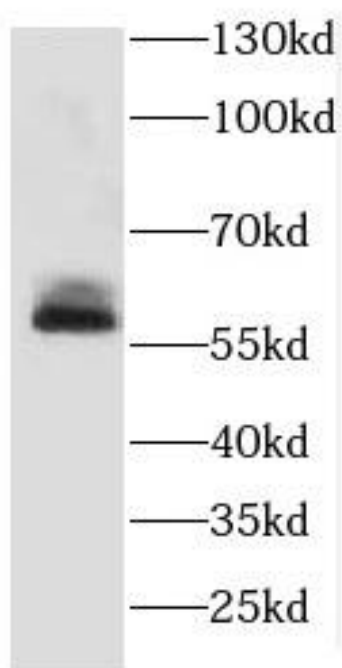
None

Immunogen information

Immunogen:	cathepsin A
Synonyms:	Lysosomal protective protein Carboxypeptidase C Carboxypeptidase L Cathepsin A Protective protein cathepsin A (PPCA) Protective protein for beta-galactosidase Lysosomal protective protein 32 kDa chain Lysosomal protective protein 20 kDa chain CTSA PPGB
Observed MW:	54-60 kDa
Uniprot ID :	P10619

Application

Reactivity:	Human, Mouse, Rat
Tested Application:	ELISA, WB
Recommended dilution:WB:	1:500-1:2000
Image:	



Sp2/0 cells were subjected to SDS PAGE followed by western blot with FNab01303(Cathepsin A antibody) at dilution of 1:300