

CASP12 antibody

Product Information

Catalog No.:	FNab01286
Size:	100µg
Form:	liquid
Purification:	Immunogen affinity purified
Purity:	≥95% as determined by SDS-PAGE
Host:	Rabbit
Clonality:	polyclonal
Clone ID:	None
IsoType:	IgG
Storage:	PBS with 0.02% sodium azide and 50% glycerol pH 7.3, -20°C for 12 months(Avoid repeated freeze / thaw cycles.)

Background

Caspase 12 is an enzyme known as a cysteine protease. It belongs to a family of enzymes called caspases that cleave their substrates at C-terminal aspartic acid residues. It is most highly related to members of the ICE subfamily of caspases that process inflammatory cytokines. Caspase-12 is located in the endoplasmic reticulum (ER). It is responsible for ER-stress-induced apoptosis, such as high calcium concentration, low oxygen and low glucose levels. This antibody detects endogenous levels of full-length caspase-12 protein (50 kDa) and its cleaved product (40-44 kDa).

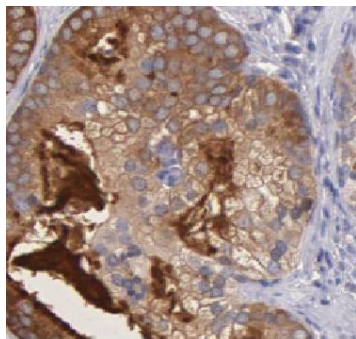
Immunogen information

Immunogen:	caspase 12(gene/pseudogene)
Synonyms:	Inactive caspase-12 (CASP-12) CASP12
Observed MW:	36-42 kDa, 50 kDa
Uniprot ID :	Q6UXS9

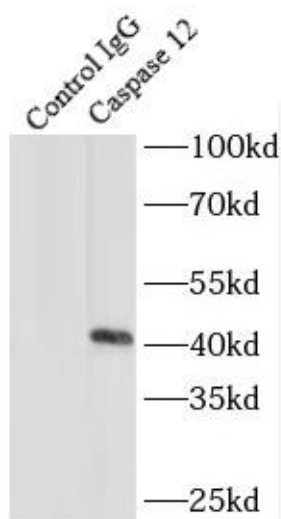
Application

Reactivity:	Human, Mouse, Rat
Tested Application:	ELISA, IF, IHC, WB, IP
Recommended dilution:	WB: 1:500-1:2000; IP: 1:500-1:1000; IHC: 1:20-1:200; IF: 1:10-1:100

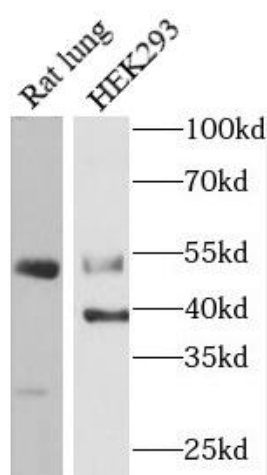
Image:



Immunohistochemistry of paraffin-embedded human prostate hyperplasia tissue slide using FNab01286(Caspase 12 Antibody) at dilution of 1:200



IP Result of anti-Caspase 12 (IP:FNab01286, 4ug; Detection:FNab01286 1:1000) with HEK-293 cells lysate 2000ug.



Various lysates were subjected to SDS PAGE followed by western blot with FNab01286(CASP12 antibody) at dilution of 1:1000