

## CPA2 antibody

### Product Information

Catalog No.:	FNab01261
Size:	100μg
Form:	liquid
Purification:	Immunogen affinity purified
Purity:	≥95% as determined by SDS-PAGE
Host:	Rabbit
Clonality:	polyclonal
Clone ID:	None
IsoType:	IgG
Storage:	PBS with 0.02% sodium azide and 50% glycerol pH 7.3, -20°C for 12 months(Avoid repeated freeze / thaw cycles.)

### Background

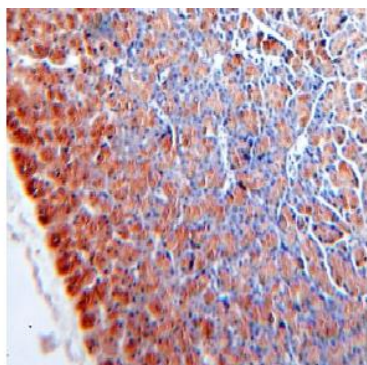
None

### Immunogen information

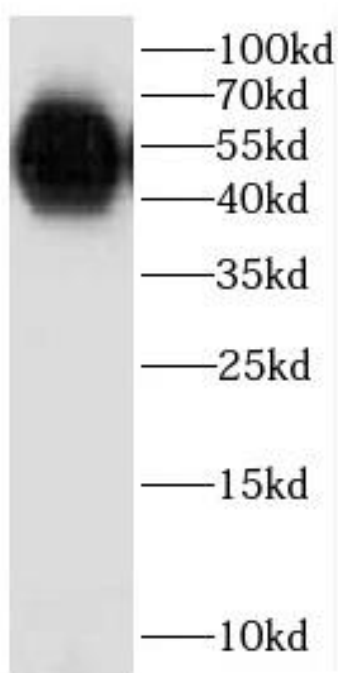
Immunogen:	carboxypeptidase A2(pancreatic)
Synonyms:	Carboxypeptidase A2 CPA2
Observed MW:	46 kDa
Uniprot ID :	P48052

### Application

Reactivity:	Human, Mouse, Rat
Tested Application:	ELISA, WB, IHC
Recommended dilution:	WB: 1:500-1:2000; IHC: 1:20-1:200
Image:	



Immunohistochemistry of paraffin-embedded human pancreas using FNab01261(CPA2 antibody) at dilution of 1:100



mouse pancreas tissue were subjected to SDS PAGE followed by western blot with FNab01261(CPA2 antibody) at dilution of 1:2000