

CAPRIN1 antibody

Product Information

Catalog No.:	FNab01251
Size:	100µg
Form:	liquid
Purification:	Immunogen affinity purified
Purity:	≥95% as determined by SDS-PAGE
Host:	Rabbit
Clonality:	polyclonal
Clone ID:	None
IsoType:	IgG
Storage:	PBS with 0.02% sodium azide and 50% glycerol pH 7.3, -20°C for 12 months(Avoid repeated freeze / thaw cycles.)

Background

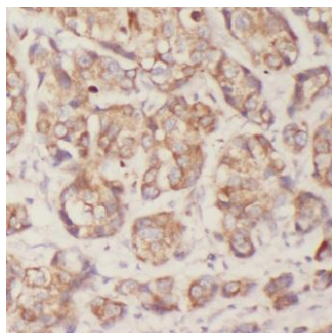
May regulate the transport and translation of mRNAs of proteins involved in synaptic plasticity in neurons and cell proliferation and migration in multiple cell types.

Immunogen information

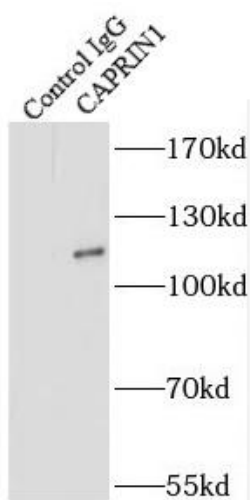
Immunogen:	cell cycle associated protein 1
Synonyms:	Caprin-1 Cell cycle-associated protein 1 Cytoplasmic activation- and proliferation-associated protein 1 GPI-anchored membrane protein 1 GPI-anchored protein p137 (GPI-p137, p137GPI) Membrane component chromosome 11 surface marker 1 RNA granule protein 105 CAPRIN1 GPIAP1 GPIP137 M11S1 RNG105
Observed MW:	116 kDa
Uniprot ID :	Q14444

Application

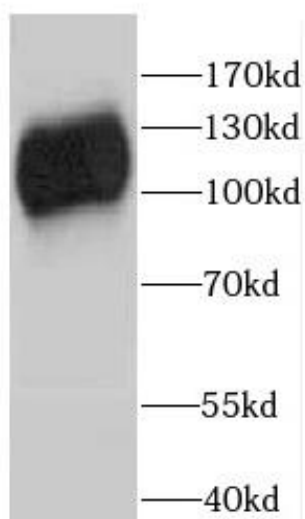
Reactivity:	Human, Mouse, Rat
Tested Application:	ELISA, IHC, IP, WB, IF
Recommended dilution:	WB: 1:500-1:2000; IP: 1:500-1:1000; IHC: 1:20-1:200; IF: 1:10-1:100
Image:	



Immunohistochemistry of paraffin-embedded human breast cancer using FNaB01251(CAPRIN1 antibody) at dilution of 1:100



IP result of anti-CAPRIN1(IP:FNaB01251, 4ug; Detection:FNaB01251 1:5000) with HeLa cells lysate 1600 ug



HeLa cells were subjected to SDS PAGE followed by western blot with FNaB01251(CAPRIN1 antibody) at dilution of 1:6000