

CAPG antibody

Product Information

| | |
|---------------|--|
| Catalog No.: | FNab01248 |
| Size: | 100µg |
| Form: | liquid |
| Purification: | Immunogen affinity purified |
| Purity: | ≥95% as determined by SDS-PAGE |
| Host: | Rabbit |
| Clonality: | polyclonal |
| Clone ID: | None |
| IsoType: | IgG |
| Storage: | PBS with 0.02% sodium azide and 50% glycerol pH 7.3, -20°C for 12 months(Avoid repeated freeze / thaw cycles.) |

Background

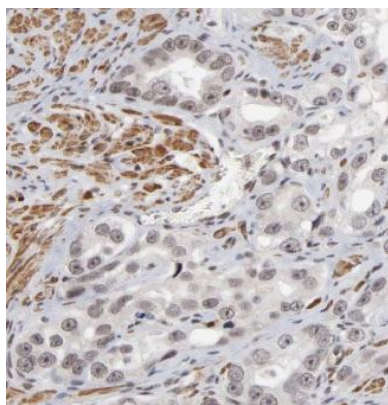
Calcium-sensitive protein which reversibly blocks the barbed ends of actin filaments but does not sever preformed actin filaments. May play an important role in macrophage function. May play a role in regulating cytoplasmic and/or nuclear structures through potential interactions with actin. May bind DNA.

Immunogen information

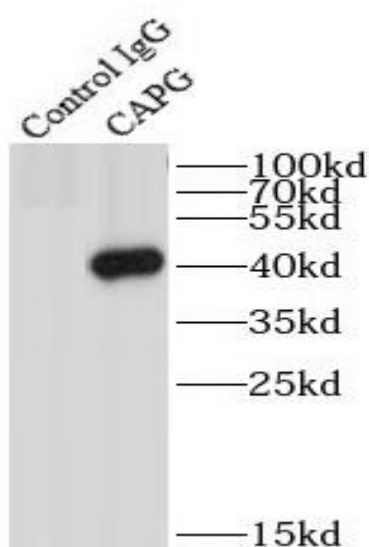
| | |
|--------------|---|
| Immunogen: | capping protein(actin filament), gelsolin-like |
| Synonyms: | Macrophage-capping protein Actin regulatory protein CAP-G CAPG AFCP MCP |
| Observed MW: | 39-42 kDa |
| Uniprot ID : | P40121 |

Application

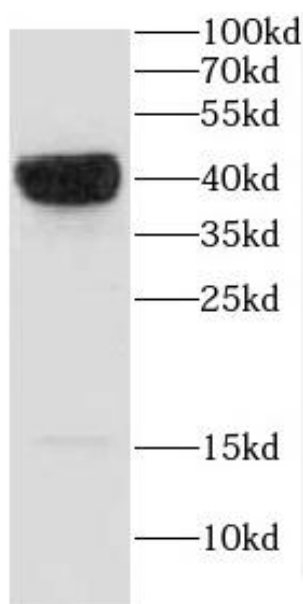
| | |
|-----------------------|---|
| Reactivity: | Human, Mouse, Rat |
| Tested Application: | ELISA, WB, IHC, IF, IP |
| Recommended dilution: | WB: 1:500-1:2000; IP: 1:500-1:1000; IHC: 1:20-1:200; IF: 1:10-1:100 |
| Image: | |



Immunohistochemistry of paraffin-embedded human prostate cancer using FNab01248(CAPG antibody) at dilution of 1:100



IP Result of anti-CAPG (IP:FNab01248, 4ug; Detection:FNab01248 1:500) with mouse heart tissue lysate 4000ug.



HeLa cells were subjected to SDS PAGE followed by western blot with FNab01248(CAPG antibody) at dilution of 1:1000