

## CAMP antibody

### Product Information

Catalog No.:	FNab01241
Size:	100µg
Form:	liquid
Purification:	Immunogen affinity purified
Purity:	≥95% as determined by SDS-PAGE
Host:	Rabbit
Clonality:	polyclonal
Clone ID:	None
IsoType:	IgG
Storage:	PBS with 0.02% sodium azide and 50% glycerol pH 7.3, -20°C for 12 months(Avoid repeated freeze / thaw cycles.)

### Background

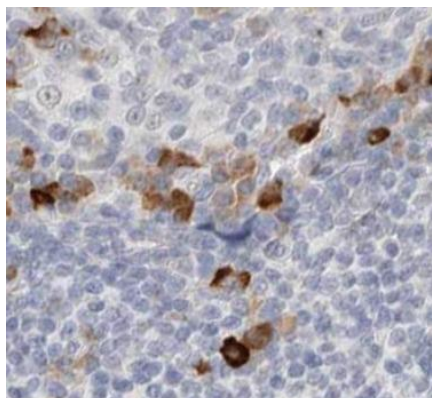
Binds to bacterial lipopolysaccharides(LPS), has antibacterial activity.

### Immunogen information

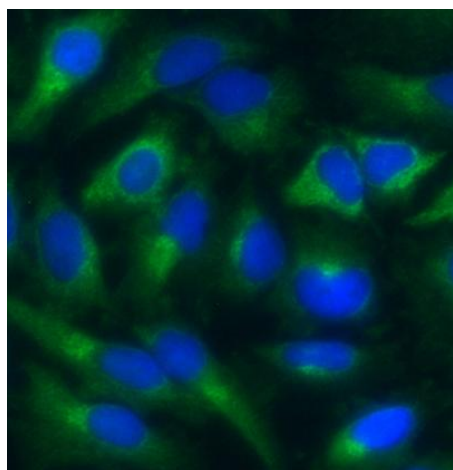
Immunogen:	cathelicidin antimicrobial peptide
Synonyms:	Cathelicidin antimicrobial peptide 18 kDa cationic antimicrobial protein (CAP-18, hCAP-18) Antibacterial peptide FALL-39 Alternative names: FALL-39 peptide antibiotic Antibacterial peptide LL-37 Antibacterial peptide KR-20 Antibacterial peptide LL-23 Antibacterial peptide LL-29 Antibacterial peptide KS-30 Antibacterial peptide RK-31 Antibacterial peptide FF-33 CAMP CAP18 FALL39
Observed MW:	15 kDa
Uniprot ID :	P49913

### Application

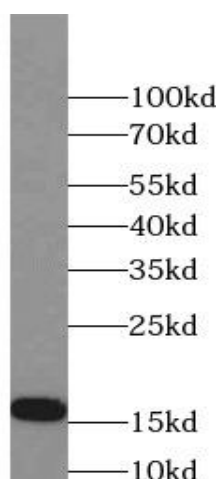
Reactivity:	Human, Mouse
Tested Application:	ELISA, IHC, WB, IF/ICC
Recommended dilution:	WB: 1:200-1:1000; IHC: 1:20-1:200; IF/ICC: 1:50-1:200
Image:	



Immunohistochemistry of paraffin-embedded human tonsillitis tissue slide using FNab01241(CAMP Antibody) at dilution of 1:50



Immunofluorescent analysis of (-20°C Methanol) fixed HeLa cells using CAMP antibody (FNab01241) at dilution of 1:100



mouse spleen tissue were subjected to SDS PAGE followed by western blot with FNab01241(CAMP Antibody) at dilution of 1:300