

CALU antibody

Product Information

Catalog No.:	FNab01226
Size:	100µg
Form:	liquid
Purification:	Immunogen affinity purified
Purity:	≥95% as determined by SDS-PAGE
Host:	Rabbit
Clonality:	polyclonal
Clone ID:	None
IsoType:	IgG
Storage:	PBS with 0.02% sodium azide and 50% glycerol pH 7.3, -20°C for 12 months(Avoid repeated freeze / thaw cycles.)

Background

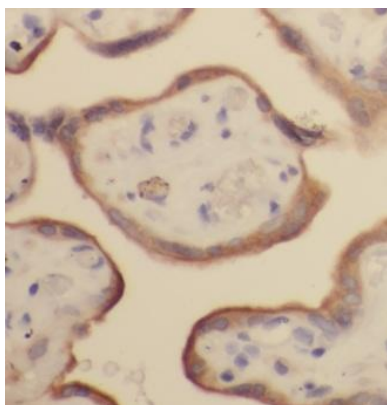
None

Immunogen information

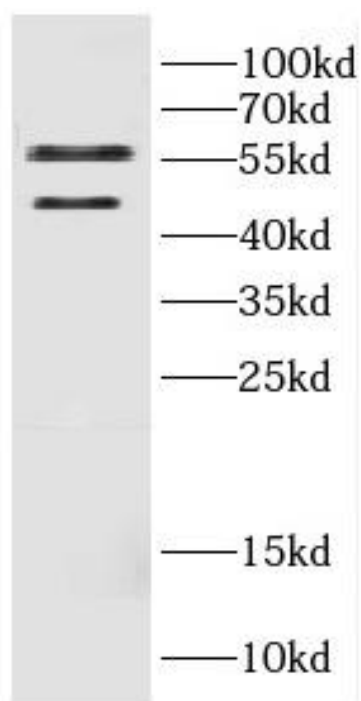
Immunogen:	calumenin
Synonyms:	Calumenin Crocalbin IEF SSP 9302 CALU
Observed MW:	47 kDa, 57 kDa
Uniprot ID :	O43852

Application

Reactivity:	Human, Mouse
Tested Application:	ELISA, WB, IHC
Recommended dilution:	WB: 1:500-1:2000; IHC: 1:20-1:200
Image:	



Immunohistochemistry of paraffin-embedded human placenta using FNab01226(CALU antibody) at dilution of 1:50



HEK-293 cells were subjected to SDS PAGE followed by western blot with FNab01226(CALU antibody) at dilution of 1:800