

## KANSL1L antibody

### Product Information

Catalog No.:	FNab01101
Size:	100µg
Form:	liquid
Purification:	Immunogen affinity purified
Purity:	≥95% as determined by SDS-PAGE
Host:	Rabbit
Clonality:	polyclonal
Clone ID:	None
IsoType:	IgG
Storage:	PBS with 0.02% sodium azide and 50% glycerol pH 7.3, -20°C for 12 months(Avoid repeated freeze / thaw cycles.)

### Background

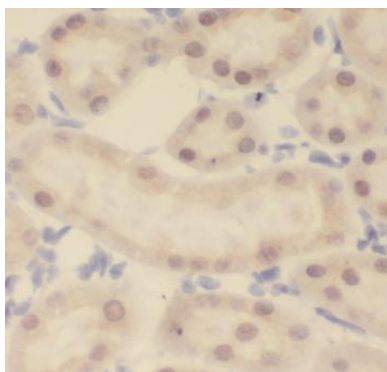
None

### Immunogen information

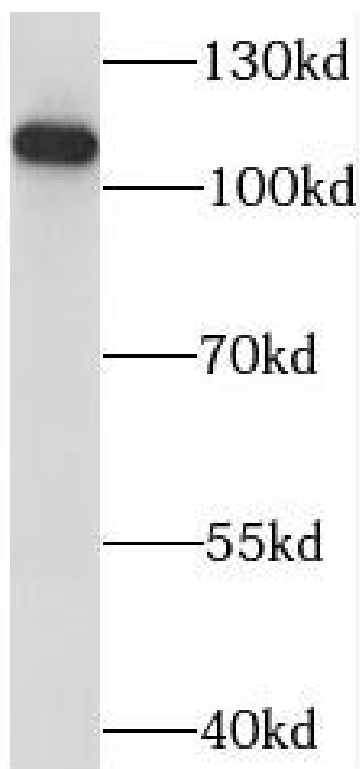
Immunogen:	chromosome 2 open reading frame 67
Synonyms:	KAT8 regulatory NSL complex subunit 1-like protein MSL1v2 KANSL1L C2orf67
Observed MW:	112, 80 kDa
Uniprot ID :	A0AUZ9

### Application

Reactivity:	Human, Mouse
Tested Application:	ELISA, WB, IHC, IF
Recommended dilution:	WB: 1:500-1:2000; IHC: 1:20-1:200; IF: 1:20-1:200
Image:	



Immunohistochemistry of paraffin-embedded human kidney tissue slide using FNab01101(C2orf67 Antibody) at dilution of 1:50



PC-3 cells were subjected to SDS PAGE followed by western blot with FNab01101(C2orf67 Antibody) at dilution of 1:1000