

C1QC antibody

Product Information

Catalog No.:	FNab01074
Size:	100µg
Form:	liquid
Purification:	Immunogen affinity purified
Purity:	≥95% as determined by SDS-PAGE
Host:	Rabbit
Clonality:	polyclonal
Clone ID:	None
IsoType:	IgG
Storage:	PBS with 0.02% sodium azide and 50% glycerol pH 7.3, -20°C for 12 months(Avoid repeated freeze / thaw cycles.)

Background

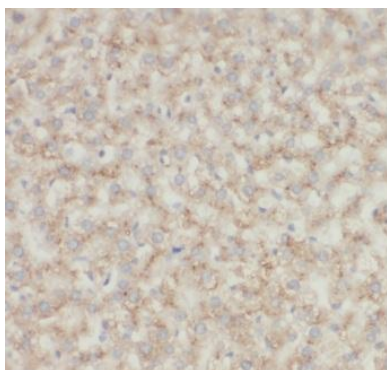
C1q associates with the proenzymes C1r and C1s to yield C1, the first component of the serum complement system. The collagen-like regions of C1q interact with the Ca(2+)-dependent C1r(2)C1s(2) proenzyme complex, and efficient activation of C1 takes place on interaction of the globular heads of C1q with the Fc regions of IgG or IgM antibody present in immune complexes.

Immunogen information

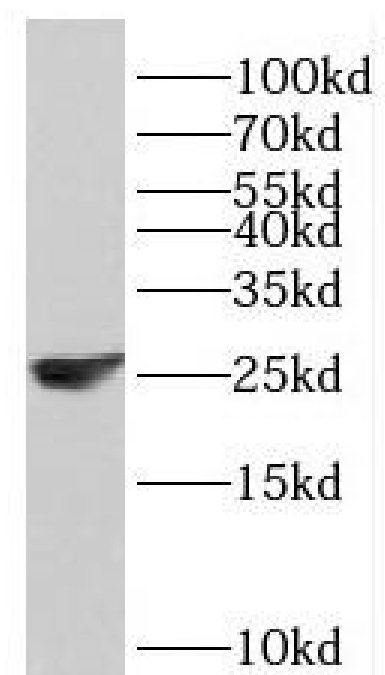
Immunogen:	complement component 1, q subcomponent, C chain
Synonyms:	Complement C1q subcomponent subunit C C1QC C1QG
Observed MW:	26 kDa
Uniprot ID :	P02747

Application

Reactivity:	Human
Tested Application:	ELISA, WB, IHC
Recommended dilution:	WB: 1:500-1:2000; IHC: 1:20-1:200
Image:	



Immunohistochemistry of paraffin-embedded human liver tissue slide using FNab01074(C1QC Antibody) at dilution of 1:50



human blood tissue were subjected to SDS PAGE followed by western blot with FNab01074(C1QC Antibody) at dilution of 1:800