

RTRAF antibody

Product Information

Catalog No.:	FNab01023
Size:	100µg
Form:	liquid
Purification:	Immunogen affinity purified
Purity:	≥95% as determined by SDS-PAGE
Host:	Rabbit
Clonality:	polyclonal
Clone ID:	None
IsoType:	IgG
Storage:	PBS with 0.02% sodium azide and 50% glycerol pH 7.3, -20°C for 12 months (Avoid repeated freeze / thaw cycles.)

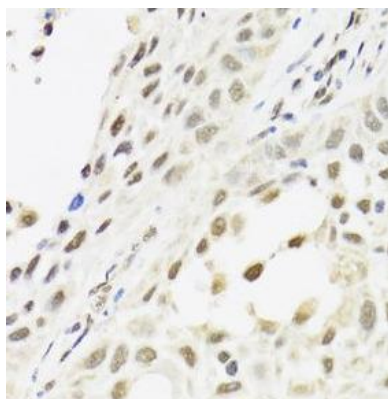
Background

Immunogen information

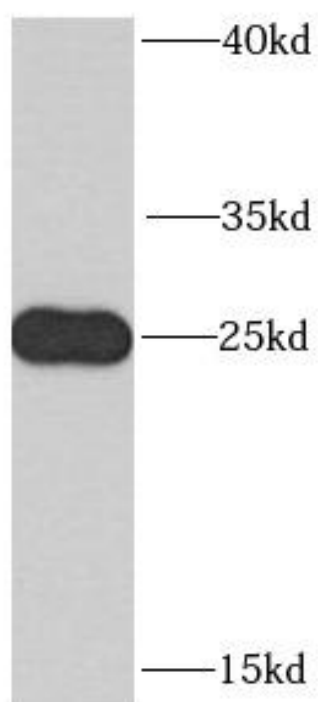
Immunogen:	chromosome 14 open reading frame 166
Synonyms:	RNA transcription, translation and transport factor protein CLE7 homolog (CLE, hCLE) RTRAF C14orf166
Observed MW:	25 kDa
Uniprot ID :	Q9Y224

Application

Reactivity:	Human
Tested Application:	ELISA, IHC, WB
Recommended dilution:	WB: 1:500 - 1:2000; IHC: 1:50 - 1:200
Image:	



Immunohistochemistry of paraffin-embedded human lung cancer using FNab01023(CLE C14orf166 antibody) at dilution of 1:100



mouse thymus tissue were subjected to SDS PAGE followed by western blot with FNab01023(CLE; C14orf166 antibody) at dilution of 1:1000