

## BVES antibody

### Product Information

Catalog No.:	FNab00992
Size:	100µg
Form:	liquid
Purification:	Immunogen affinity purified
Purity:	≥95% as determined by SDS-PAGE
Host:	Rabbit
Clonality:	polyclonal
Clone ID:	None
IsoType:	IgG
Storage:	PBS with 0.02% sodium azide and 50% glycerol pH 7.3, -20°C for 12 months(Avoid repeated freeze / thaw cycles.)

### Background

Cell adhesion molecule involved in the establishment and/or maintenance of cell integrity. Involved in the formation and regulation of the tight junction(TJ) paracellular permeability barrier in epithelial cells(PubMed:16188940). Plays a role in VAMP3-mediated vesicular transport and recycling of different receptor molecules through its interaction with VAMP3. Plays a role in the regulation of cell shape and movement by modulating the Rho-family GTPase activity through its interaction with ARHGEF25/GEFT. Induces primordial adhesive contact and aggregation of epithelial cells in a Ca(2+)-independent manner. Also involved in striated muscle regeneration and repair and in the regulation of cell spreading(By similarity). Important for the maintenance of cardiac function. Plays a regulatory function in heart rate dynamics mediated, at least in part, through cAMP-binding and, probably, by increasing cell surface expression of the potassium channel KCNK2 and enhancing current density(PubMed:26642364). Is also a caveolae-associated protein important for the preservation of caveolae structural and functional integrity as well as for heart protection against ischemia injury.

### Immunogen information

Immunogen:	blood vessel epicardial substance
Synonyms:	Blood vessel epicardial substance (hBVES) Popeye domain-containing protein 1 (Popeye protein 1) BVES POP1 POPDC1
Observed MW:	41-70 kDa
Uniprot ID :	Q8NE79

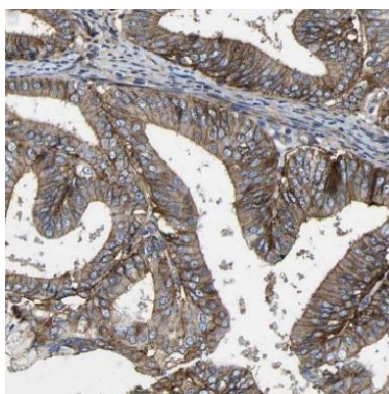
## Application

Reactivity: Human, Mouse, Rat

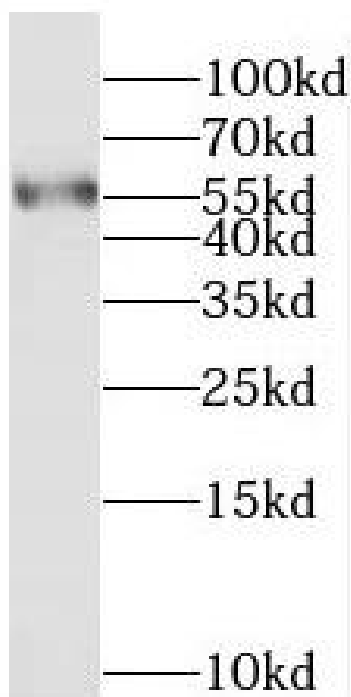
Tested Application: ELISA, WB, IHC

Recommended dilution: WB: 1:100-1:1000; IHC: 1:20-1:200

Image:



Immunohistochemistry of paraffin-embedded human ovary tumor using FNab00992(BVES antibody) at dilution of 1:100



mouse skeletal muscle tissue were subjected to SDS PAGE followed by western blot with FNab00992(BVES antibody) at dilution of 1:500