

BTBD6 antibody

Product Information

Catalog No.:	FNab00973
Size:	100µg
Form:	liquid
Purification:	Immunogen affinity purified
Purity:	≥95% as determined by SDS-PAGE
Host:	Rabbit
Clonality:	polyclonal
Clone ID:	None
IsoType:	IgG
Storage:	PBS with 0.02% sodium azide and 50% glycerol pH 7.3, -20°C for 12 months(Avoid repeated freeze / thaw cycles.)

Background

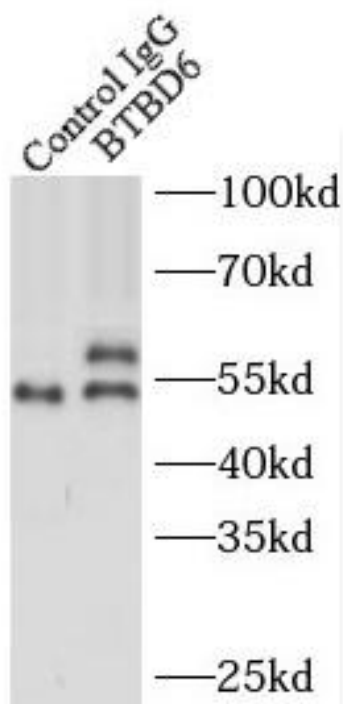
Adapter protein for the CUL3 E3 ubiquitin-protein ligase complex. Involved in late neuronal development and muscle formation(By similarity).

Immunogen information

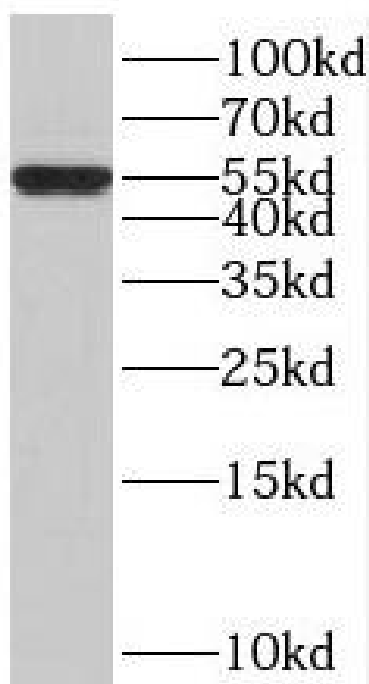
Immunogen:	BTB(POZ) domain containing 6
Synonyms:	BTB/POZ domain-containing protein 6 Lens BTB domain protein BTBD6 BDPL
Observed MW:	53-58 kDa
Uniprot ID :	Q96KE9

Application

Reactivity:	Human, Mouse, Rat
Tested Application:	ELISA, IP, WB
Recommended dilution:	WB: 1:500-1:1000; IP: 1:200-1:1000
Image:	



IP Result of anti-BTBD6 (IP:FNab00973, 4ug;
Detection:FNab00973 1:300) with Y79 cells lysate
800ug.



HepG2 cells were subjected to SDS PAGE
followed by western blot with
FNab00973(BTBD6 Antibody) at dilution of
1:300