

CTCFL antibody

Product Information

Catalog No.:	FNab00932
Size:	100µg
Form:	liquid
Purification:	Protein A+G purification
Purity:	≥95% as determined by SDS-PAGE
Host:	Mouse
Clonality:	monoclonal
Clone ID:	2B10
IsoType:	IgG1
Storage:	PBS with 0.02% sodium azide and 50% glycerol pH 7.3, -20°C for 12 months(Avoid repeated freeze / thaw cycles.)

Background

CTCFL, also named BORIS(for brother of the regulator of imprinted sites) is a paralogue of the 11 zinc-finger transcription factor, CTCF. It is predominantly expressed in spermatocytes in the testis, also can be found in tumors and cancer cell lines. It mainly participates in insulator function, nuclear architecture and transcriptional control, which probably acts by recruiting epigenetic chromatin modifiers. It has a key role in gene imprinting in male germline, by participating in the establishment of differential methylation at the IGF2/H19 imprinted control region(ICR). Directly binds the unmethylated H19 ICR and recruits the PRMT7 methyltransferase, leading to methylate histone H4 'Arg-3' to form H4R3sme2.

Immunogen information

Immunogen:	CCCTC-binding factor(zinc finger protein)-like
Synonyms:	Transcriptional repressor CTCFL Brother of the regulator of imprinted sites CCCTC-binding factor CTCF paralog CTCF-like protein Cancer/testis antigen 27 (CT27) Zinc finger protein CTCF-T CTCFL BORIS
Observed MW:	75 kDa
Uniprot ID :	Q8NI51

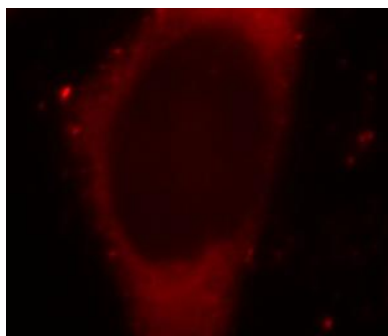
Application

Reactivity:	Human, Mouse
-------------	--------------

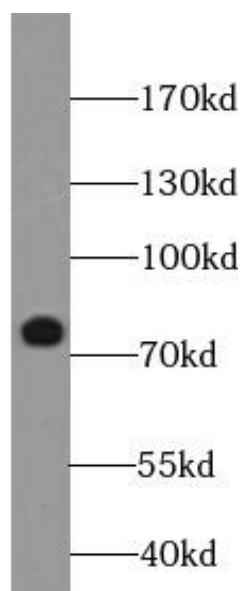
Tested Application: ELISA, WB, IF

Recommended dilution: WB: 1:500-1:2000; IF: 1:10-1:100

Image:



Immunofluorescent analysis of MCF-7 cells, using FNab00932(BORIS antibody) at 1:25 dilution and Rhodamine-labeled goat anti-mouse IgG (red).



HeLa cells were subjected to SDS PAGE followed by western blot with FNab00932(BORIS antibody) at dilution of 1:1000