

## BLNK antibody

### Product Information

Catalog No.:	FNab00908
Size:	100µg
Form:	liquid
Purification:	Immunogen affinity purified
Purity:	≥95% as determined by SDS-PAGE
Host:	Rabbit
Clonality:	polyclonal
Clone ID:	None
IsoType:	IgG
Storage:	PBS with 0.02% sodium azide and 50% glycerol pH 7.3, -20°C for 12 months(Avoid repeated freeze / thaw cycles.)

### Background

Functions as a central linker protein, downstream of the B-cell receptor(BCR), bridging the SYK kinase to a multitude of signaling pathways and regulating biological outcomes of B-cell function and development. Plays a role in the activation of ERK/EPHB2, MAP kinase p38 and JNK. Modulates AP1 activation. Important for the activation of NF-kappa-B and NFAT. Plays an important role in BCR-mediated PLCG1 and PLCG2 activation and Ca(2+) mobilization and is required for trafficking of the BCR to late endosomes. However, does not seem to be required for pre-BCR-mediated activation of MAP kinase and phosphatidyl-inositol 3(PI3) kinase signaling. May be required for the RAC1-JNK pathway. Plays a critical role in orchestrating the pro-B cell to pre-B cell transition. May play an important role in BCR-induced B-cell apoptosis.

### Immunogen information

Immunogen:	B-cell linker
Synonyms:	B-cell linker protein B-cell adapter containing a SH2 domain protein B-cell adapter containing a Src homology 2 domain protein Cytoplasmic adapter protein Src homology 2 domain-containing leukocyte protein of 65 kDa (SLP-65) BLNK BASH SLP65
Observed MW:	68 kDa, 70 kDa
Uniprot ID :	Q8WV28

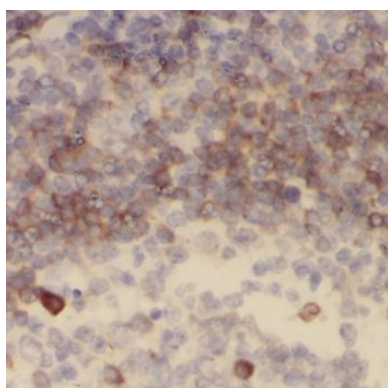
### Application

Reactivity: Human, Mouse, Rat

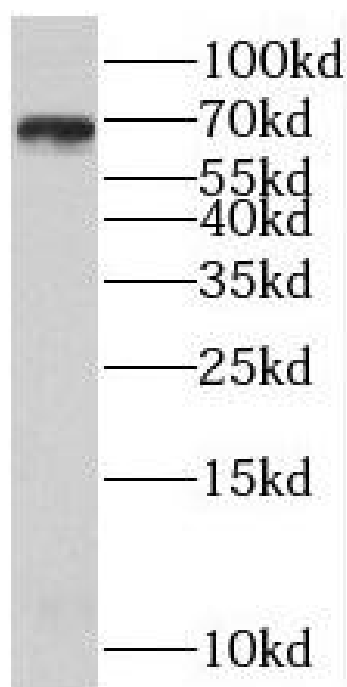
Tested Application: ELISA, WB, IHC

Recommended dilution: WB: 1:500-1:2000; IHC: 1:20-1:200

Image:



Immunohistochemistry of paraffin-embedded human tonsillitis tissue slide using FNab00908(BLNK Antibody) at dilution of 1:400 heat mediated antigen retrieved with Tris-EDTA buffer(pH9).



Raji cells were subjected to SDS PAGE followed by western blot with FNab00908(BLNK Antibody) at dilution of 1:1000