

## BIN2 antibody

### Product Information

Catalog No.:	FNab00898
Size:	100µg
Form:	liquid
Purification:	Immunogen affinity purified
Purity:	≥95% as determined by SDS-PAGE
Host:	Rabbit
Clonality:	polyclonal
Clone ID:	None
IsoType:	IgG
Storage:	PBS with 0.02% sodium azide and 50% glycerol pH 7.3, -20°C for 12 months(Avoid repeated freeze / thaw cycles.)

### Background

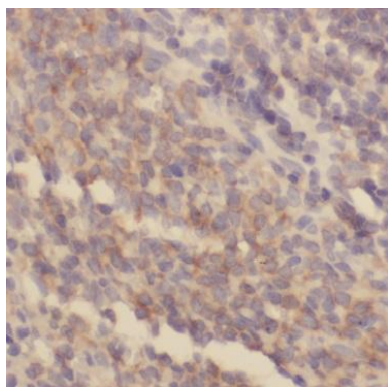
Promotes cell motility and migration, probably via its interaction with the cell membrane and with podosome proteins that mediate interaction with the cytoskeleton. Modulates membrane curvature and mediates membrane tubulation. Plays a role in podosome formation. Inhibits phagocytosis.

### Immunogen information

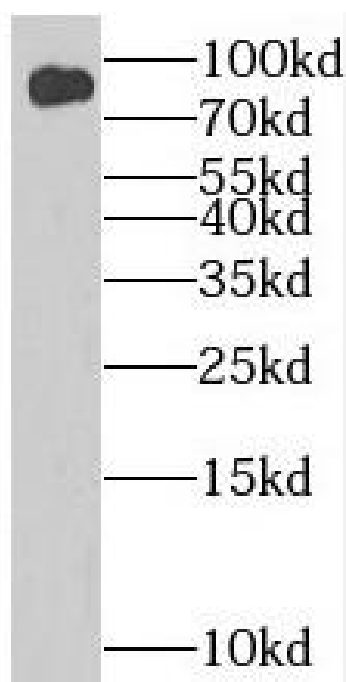
Immunogen:	bridging integrator 2
Synonyms:	Bridging integrator 2 Breast cancer-associated protein 1 BIN2 BRAP1
Observed MW:	80-90 kDa
Uniprot ID :	Q9UBW5

### Application

Reactivity:	Human
Tested Application:	ELISA, WB, IHC
Recommended dilution:	WB: 1:500-1:2000; IHC: 1:20-1:200
Image:	



Immunohistochemistry of paraffin-embedded human spleen using FNab00898(BIN2 antibody) at dilution of 1:100



U-937 cells were subjected to SDS PAGE followed by western blot with FNab00898(BIN2 Antibody) at dilution of 1:600