

## BHLHE40 antibody

### Product Information

Catalog No.:	FNab00888
Size:	100µg
Form:	liquid
Purification:	Immunogen affinity purified
Purity:	≥95% as determined by SDS-PAGE
Host:	Rabbit
Clonality:	polyclonal
Clone ID:	None
IsoType:	IgG
Storage:	PBS with 0.02% sodium azide and 50% glycerol pH 7.3, -20°C for 12 months (Avoid repeated freeze / thaw cycles.)

### Background

This gene encodes a basic helix-loop-helix protein expressed in various tissues. The encoded protein can interact with ARNTL or compete for E-box binding sites in the promoter of PER1 and repress CLOCK/ARNTL's transactivation of PER1. This gene is believed to be involved in the control of circadian rhythm and cell differentiation.

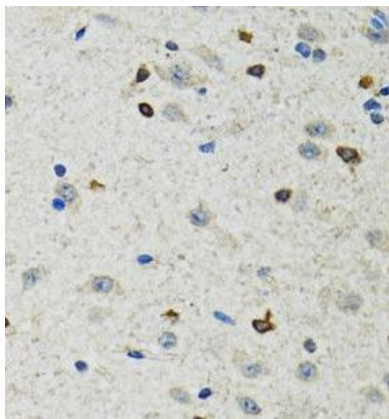
### Immunogen information

Immunogen:	basic helix-loop-helix family, member e40
Synonyms:	Class E basic helix-loop-helix protein 40 (bHLHe40) Class B basic helix-loop-helix protein 2 (bHLHb2) Differentially expressed in chondrocytes protein 1 (DEC1) Enhancer-of-split and hairy-related protein 2 (SHARP-2) Stimulated by retinoic acid gene 13 protein BHLHE40 BHLHB2 DEC1 SHARP2 STRA13
Observed MW:	48 kDa
Uniprot ID :	O14503

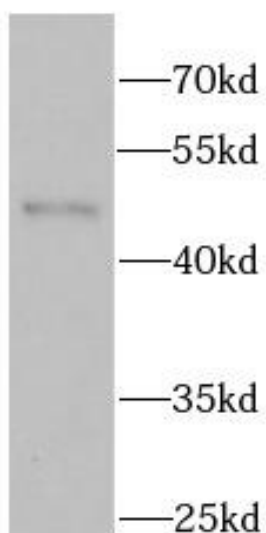
### Application

Reactivity:	Human, Mouse, Rat
Tested Application:	ELISA, WB, IHC, IF
Recommended dilution:	WB: 1:500 - 1:2000; IHC: 1:50 - 1:200; IF: 1:50 - 1:200

Image:



Immunohistochemistry of paraffin-embedded rat brain using FNab00888( BHLHE40 Antibody) at dilution of 1:100



mouse brain tissue were subjected to SDS PAGE followed by western blot with FNab00888( BHLHE40 Antibody) at dilution of 1:1000