

BCL2 antibody

Product Information

Catalog No.:	FNab00839
Size:	100µg
Form:	liquid
Purification:	Immunogen affinity purified
Purity:	≥95% as determined by SDS-PAGE
Host:	Rabbit
Clonality:	polyclonal
Clone ID:	None
IsoType:	IgG
Storage:	PBS with 0.02% sodium azide and 50% glycerol pH 7.3, -20°C for 12 months (Avoid repeated freeze / thaw cycles.)

Background

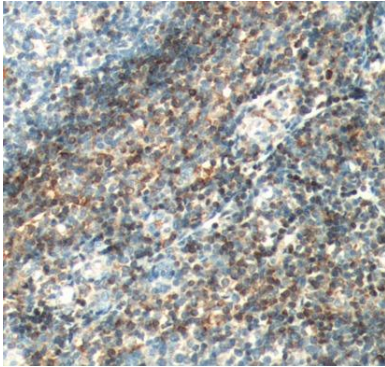
This gene encodes an integral outer mitochondrial membrane protein that blocks the apoptotic death of some cells such as lymphocytes. Constitutive expression of BCL2, such as in the case of translocation of BCL2 to Ig heavy chain locus, is thought to be the cause of follicular lymphoma. Alternative splicing results in multiple transcript variants.

Immunogen information

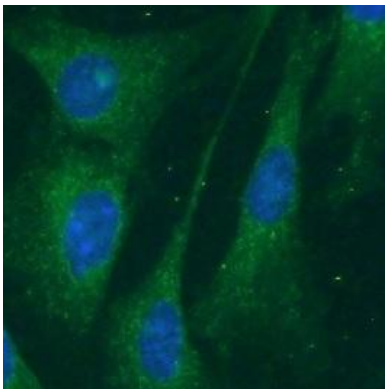
Immunogen:	B-cell CLL/lymphoma 2
Synonyms:	Apoptosis regulator Bcl-2 BCL2
Observed MW:	26 kDa
Uniprot ID :	P10415

Application

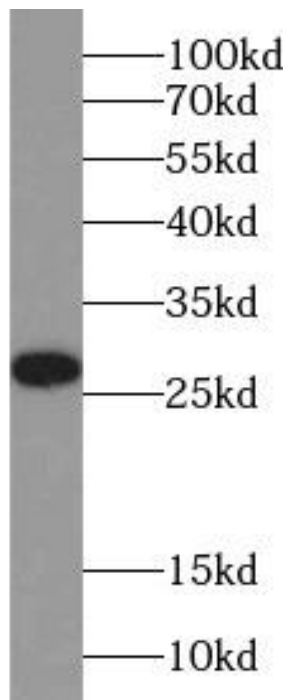
Reactivity:	Human, Mouse, Rat
Tested Application:	ELISA, WB, IHC, IF
Recommended dilution:	WB: 1:500 - 1:2000; IHC: 1:50 - 1:100; IF: 1:50 - 1:200
Image:	



Immunohistochemistry of paraffin-embedded human tonsillitis tissue slide using FNab00839(BCL2 Antibody) at dilution of 1:200.



Immunofluorescent analysis of NIH/3T3 cells, using BCL2 antibody FNab00839 at 1:100 dilution and FITC-labeled goat anti-rabbit IgG (green).



HL-60 cells were subjected to SDS PAGE followed by western blot with FNab00839(Bcl2 Antibody) at dilution of 1:1000