

## BCL10 antibody

### Product Information

|               |  |
|---------------|--|
| Catalog No.:  | FNab00836  |
| Size:         | 100µg  |
| Form:         | liquid   |
| Purification: | Immunogen affinity purified  |
| Purity:       | ≥95% as determined by SDS-PAGE   |
| Host:         | Rabbit   |
| Clonality:    | polyclonal   |
| Clone ID:     | None   |
| IsoType:      | IgG  |
| Storage:      | PBS with 0.02% sodium azide and 50% glycerol pH 7.3, -20°C for 12 months(Avoid repeated freeze / thaw cycles.) |

### Background

Involved in adaptive immune response(PubMed:25365219). Promotes apoptosis, pro-caspase-9 maturation and activation of NF-kappa-B via NIK and IKK. May be an adapter protein between upstream TNFR1-TRADD-RIP complex and the downstream NIK-IKK-IKAP complex. Is a substrate for MALT1(PubMed:18264101).

### Immunogen information

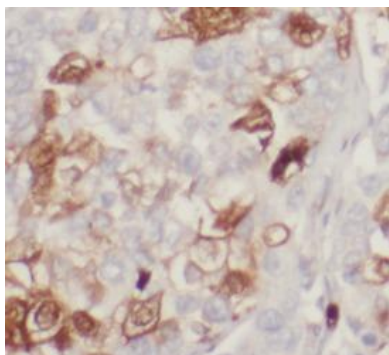
|              |   |
|--------------|---|
| Immunogen:   | B-cell CLL/lymphoma 10  |
| Synonyms:    | B-cell lymphoma/leukemia 10 B-cell CLL/lymphoma 10 (Bcl-10) CARD-containing molecule enhancing NF-kappa-B CARD-like apoptotic protein (hCLAP) CED-3/ICH-1 prodomain homologous E10-like regulator (CIPER) Cellular homolog of vCARMEN (cCARMEN) Cellular-E10 (c-E10) Mammalian CARD-containing adapter molecule E10 (mE10) BCL10 CIPER CLAP |
| Observed MW: | 32 kDa  |
| Uniprot ID : | O95999  |

### Application

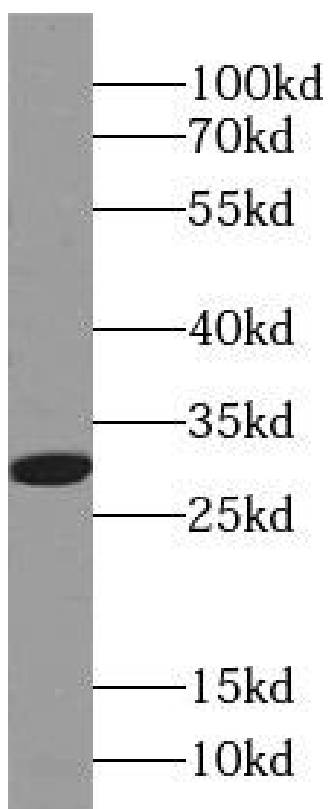
|                     |                |
|---------------------|----------------|
| Reactivity:         | Human, Mouse   |
| Tested Application: | ELISA, WB, IHC |

Recommended dilution: WB: 1:500-1:1000; IHC: 1:20-1:200

Image:



Immunohistochemistry of paraffin-embedded human lung cancer using FNab00836(BCL10 antibody) at dilution of 1:100



Mouse ovary tissue were subjected to SDS PAGE followed by western blot with FNab00836(BCL10 antibody) at dilution of 1:500