

## ENPP2 antibody

### Product Information

Catalog No.:	FNab00749
Size:	100µg
Form:	liquid
Purification:	Immunogen affinity purified
Purity:	≥95% as determined by SDS-PAGE
Host:	Rabbit
Clonality:	polyclonal
Clone ID:	None
IsoType:	IgG
Storage:	PBS with 0.02% sodium azide and 50% glycerol pH 7.3, -20°C for 12 months(Avoid repeated freeze / thaw cycles.)

### Background

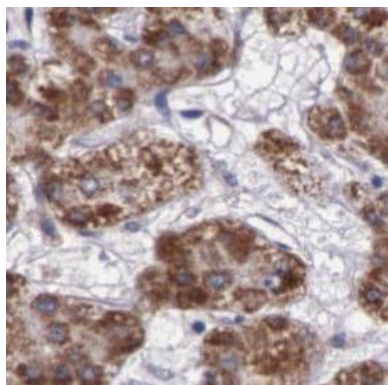
Hydrolyzes lysophospholipids to produce lysophosphatidic acid(LPA) in extracellular fluids. Major substrate is lysophosphatidylcholine. Also can act on sphingosylphosphorylcholine producing sphingosine-1-phosphate, a modulator of cell motility. Can hydrolyze, in vitro, bis-pNPP, to some extent pNP-TMP, and barely ATP. Involved in several motility-related processes such as angiogenesis and neurite outgrowth. Acts as an angiogenic factor by stimulating migration of smooth muscle cells and microtubule formation. Stimulates migration of melanoma cells, probably via a pertussis toxin-sensitive G protein. May have a role in induction of parturition. Possible involvement in cell proliferation and adipose tissue development. Tumor cell motility-stimulating factor.

### Immunogen information

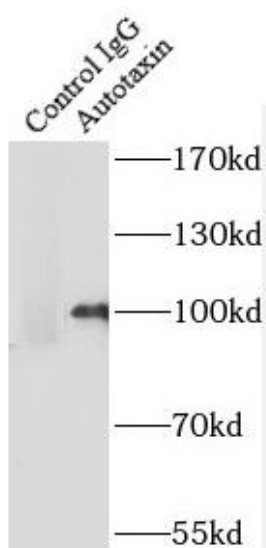
Immunogen:	ectonucleotide pyrophosphatase/phosphodiesterase 2
Synonyms:	Ectonucleotide pyrophosphatase/phosphodiesterase family member 2 (ENPP 2) Autotaxin Extracellular lysophospholipase D (LysoPLD) ENPP2 ATX PDNP2
Observed MW:	100 kDa
Uniprot ID :	Q13822

### Application

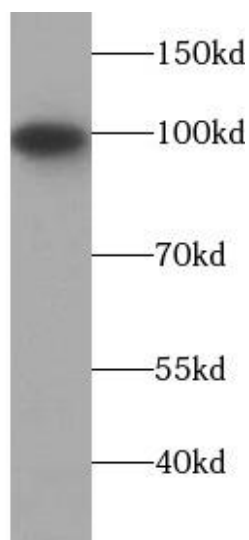
Reactivity:	Human, Mouse, Rat
Tested Application:	ELISA, WB, IHC, IP
Recommended dilution:	WB: 1:500-1:1000; IP: 1:500-1:1000; IHC: 1:20-1:200
Image:	



Immunohistochemistry of paraffin-embedded human liver cancer tissue slide using FNab00749(ENPP2 Antibody) at dilution of 1:50



IP Result of anti-Autotaxin (IP:FNab00749, 5ug; Detection:FNab00749 1:500) with mouse brain tissue lysate 4000ug.



mouse brain tissue were subjected to SDS PAGE followed by western blot with FNab00749(ENPP2 antibody) at dilution of 1:500