

ATP5F1B antibody

Product Information

| | |
|---------------|--|
| Catalog No.: | FNab00733 |
| Size: | 100µg |
| Form: | liquid |
| Purification: | Immunogen affinity purified |
| Purity: | ≥95% as determined by SDS-PAGE |
| Host: | Rabbit |
| Clonality: | polyclonal |
| Clone ID: | None |
| IsoType: | IgG |
| Storage: | PBS with 0.02% sodium azide and 50% glycerol pH 7.3, -20°C for 12 months(Avoid repeated freeze / thaw cycles.) |

Background

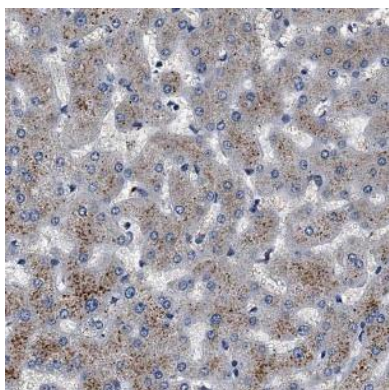
None

Immunogen information

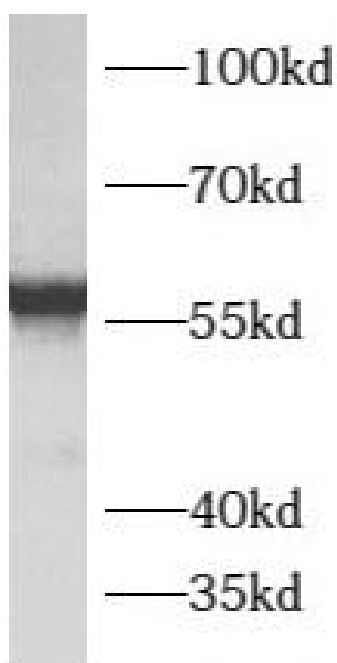
| | |
|--------------|---|
| Immunogen: | ATP synthase, H ⁺ transporting, mitochondrial F1 complex, beta polypeptide |
| Synonyms: | ATP synthase subunit beta, mitochondrial ATP synthase F1 subunit beta ATP5F1B ATP5B ATPMB ATPSB |
| Observed MW: | 56 kDa |
| Uniprot ID : | P06576 |

Application

| | |
|-----------------------|---|
| Reactivity: | Human, Mouse, Rat |
| Tested Application: | ELISA, WB, IHC, IF |
| Recommended dilution: | WB: 1:500 - 1:2000; IHC: 1:50 - 1:200; IF: 1:50 - 1:100 |
| Image: | |



Immunohistochemistry of paraffin-embedded human liver using FNab00733(ATPB antibody) at dilution of 1:100



human heart tissue were subjected to SDS PAGE followed by western blot with FNab00733(ATPB antibody) at dilution of 1:500