

## ATPAF1 antibody

### Product Information

Catalog No.:	FNab00731
Size:	100µg
Form:	liquid
Purification:	Immunogen affinity purified
Purity:	≥95% as determined by SDS-PAGE
Host:	Rabbit
Clonality:	polyclonal
Clone ID:	None
IsoType:	IgG
Storage:	PBS with 0.02% sodium azide and 50% glycerol pH 7.3, -20°C for 12 months(Avoid repeated freeze / thaw cycles.)

### Background

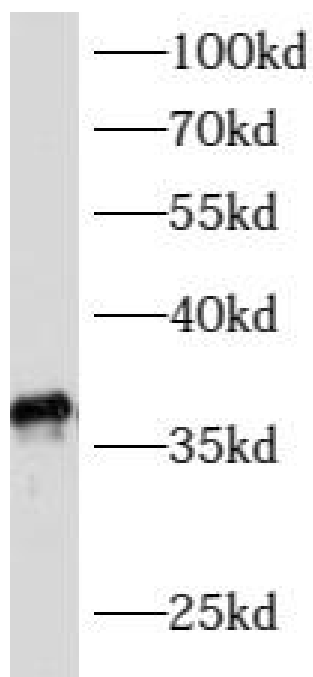
May play an essential role for the assembly of the mitochondrial F1-F0 complex.

### Immunogen information

Immunogen:	ATP synthase mitochondrial F1 complex assembly factor 1
Synonyms:	ATP synthase mitochondrial F1 complex assembly factor 1 ATP11 homolog ATPAF1 ATP11
Observed MW:	36 kDa
Uniprot ID :	Q5TC12

### Application

Reactivity:	Human, Mouse, Rat
Tested Application:	ELISA, WB
Recommended dilution:	WB: 1:500-1:2000
Image:	



mouse liver tissue were subjected to SDS PAGE followed by western blot with FNab00731(ATPAF1 antibody) at dilution of 1:500