

ATP6V1C2 antibody

Product Information

Catalog No.:	FNab00720
Size:	100µg
Form:	liquid
Purification:	Immunogen affinity purified
Purity:	≥95% as determined by SDS-PAGE
Host:	Rabbit
Clonality:	polyclonal
Clone ID:	None
IsoType:	IgG
Storage:	PBS with 0.02% sodium azide and 50% glycerol pH 7.3, -20°C for 12 months(Avoid repeated freeze / thaw cycles.)

Background

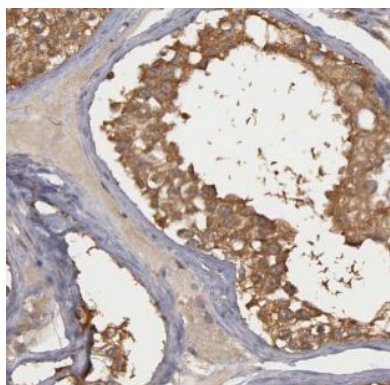
Subunit of the peripheral V1 complex of vacuolar ATPase. Subunit C is necessary for the assembly of the catalytic sector of the enzyme and is likely to have a specific function in its catalytic activity. V-ATPase is responsible for acidifying a variety of intracellular compartments in eukaryotic cells.

Immunogen information

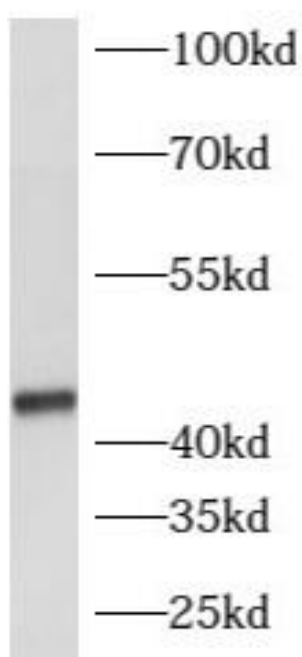
Immunogen:	ATPase, H ⁺ transporting, lysosomal 42kDa, V1 subunit C2
Synonyms:	V-type proton ATPase subunit C 2 (V-ATPase subunit C 2) Vacuolar proton pump subunit C 2 ATP6V1C2
Observed MW:	44 kDa
Uniprot ID :	Q8NEY4

Application

Reactivity:	Human, Mouse, Rat
Tested Application:	ELISA, WB, IHC
Recommended dilution:	WB: 1:500-1:2000; IHC: 1:20-1:200
Image:	



Immunohistochemistry of paraffin-embedded human testis using FNab00720(ATP6V1C2 antibody) at dilution of 1:50



human kidney tissue were subjected to SDS PAGE followed by western blot with FNab00720(ATP6V1C2 antibody) at dilution of 1:500