

## ATP2C1 antibody

### Product Information

Catalog No.:	FNab00700
Size:	100µg
Form:	liquid
Purification:	Immunogen affinity purified
Purity:	≥95% as determined by SDS-PAGE
Host:	Rabbit
Clonality:	polyclonal
Clone ID:	None
IsoType:	IgG
Storage:	PBS with 0.02% sodium azide and 50% glycerol pH 7.3, -20°C for 12 months (Avoid repeated freeze / thaw cycles.)

### Background

The protein encoded by this gene belongs to the family of P-type cation transport ATPases. This magnesium-dependent enzyme catalyzes the hydrolysis of ATP coupled with the transport of calcium ions. Defects in this gene cause Hailey-Hailey disease, an autosomal dominant disorder. Alternatively spliced transcript variants encoding different isoforms have been identified.

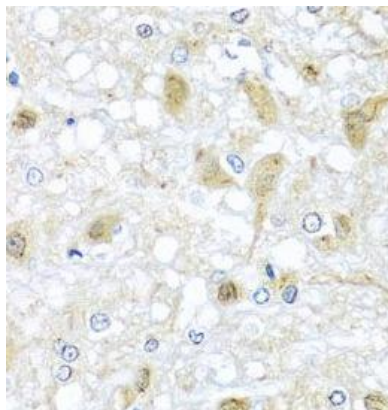
### Immunogen information

Immunogen:	ATPase, Ca <sup>++</sup> transporting, type 2C, member 1
Synonyms:	Calcium-transporting ATPase type 2C member 1 (ATPase 2C1) ATP-dependent Ca(2+) pump PMR1 Ca(2+)/Mn(2+)-ATPase 2C1 Secretory pathway Ca(2+)-transporting ATPase type 1 (SPCA1) ATP2C1 KIAA1347 PMR1L
Observed MW:	101 kDa
Uniprot ID :	P98194

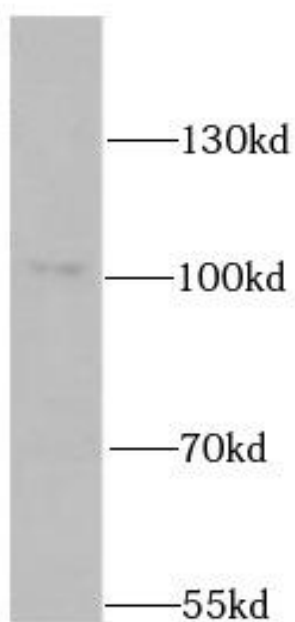
### Application

Reactivity:	Human, Mouse, Rat
Tested Application:	ELISA, WB, IHC
Recommended dilution:	WB: 1:500 - 1:2000; IHC: 1:50 - 1:200

Image:



Immunohistochemistry of paraffin-embedded rat brain using FNab00700(ATP2C1 antibody) at dilution of 1:100



mouse brain tissue were subjected to SDS PAGE followed by western blot with FNab00700( ATP2C1 Antibody) at dilution of 1:1000