

## ATP2A1 antibody

### Product Information

Catalog No.:	FNab00699
Size:	100µg
Form:	liquid
Purification:	Immunogen affinity purified
Purity:	≥95% as determined by SDS-PAGE
Host:	Rabbit
Clonality:	polyclonal
Clone ID:	None
IsoType:	IgG
Storage:	PBS with 0.02% sodium azide and 50% glycerol pH 7.3, -20°C for 12 months(Avoid repeated freeze / thaw cycles.)

### Background

Key regulator of striated muscle performance by acting as the major Ca(2+) ATPase responsible for the reuptake of cytosolic Ca(2+) into the sarcoplasmic reticulum. Catalyzes the hydrolysis of ATP coupled with the translocation of calcium from the cytosol to the sarcoplasmic reticulum lumen. Contributes to calcium sequestration involved in muscular excitation/contraction.

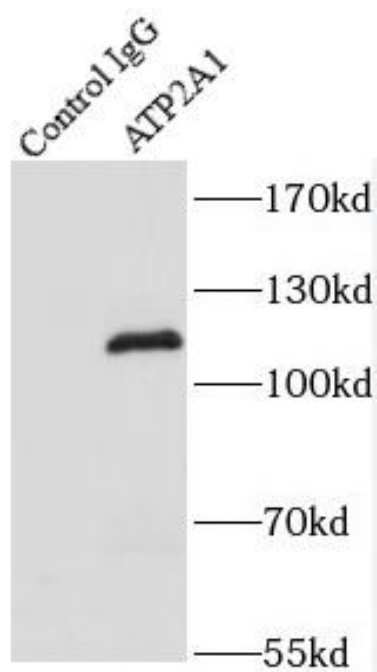
### Immunogen information

Immunogen:	ATPase, Ca <sup>++</sup> transporting, cardiac muscle, fast twitch 1
Synonyms:	Sarcoplasmic/endoplasmic reticulum calcium ATPase 1 (SERCA1, SR Ca(2+)-ATPase 1) Calcium pump 1 Calcium-transporting ATPase sarcoplasmic reticulum type, fast twitch skeletal muscle isoform Endoplasmic reticulum class 1/2 Ca(2+) ATPase ATP2A1
Observed MW:	116 kDa
Uniprot ID :	O14983

### Application

Reactivity:	Human, Mouse
Tested Application:	ELISA, IP
Recommended dilution:IP:	1:500-1:2000

Image:



IP Result of anti-ATP2A1 (IP:FNab00699, 5ug;  
Detection:FNab00699 1:700) with mouse skeletal  
muscle tissue lysate 2160ug.