

ATP1A2 antibody

Product Information

Catalog No.:	FNab00693
Size:	100µg
Form:	liquid
Purification:	Immunogen affinity purified
Purity:	≥95% as determined by SDS-PAGE
Host:	Rabbit
Clonality:	polyclonal
Clone ID:	None
IsoType:	IgG
Storage:	PBS with 0.02% sodium azide and 50% glycerol pH 7.3, -20°C for 12 months(Avoid repeated freeze / thaw cycles.)

Background

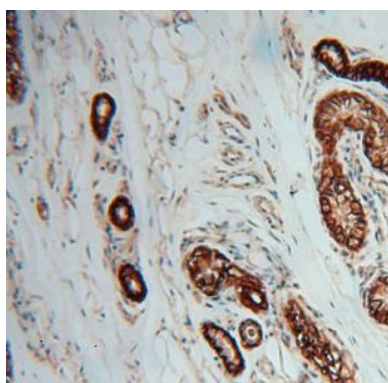
This is the catalytic component of the active enzyme, which catalyzes the hydrolysis of ATP coupled with the exchange of sodium and potassium ions across the plasma membrane. This action creates the electrochemical gradient of sodium and potassium, providing the energy for active transport of various nutrients.

Immunogen information

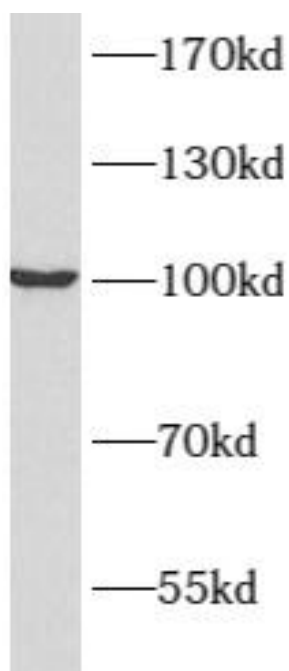
Immunogen:	ATPase, Na ⁺ /K ⁺ transporting, alpha 2(+) polypeptide
Synonyms:	Sodium/potassium-transporting ATPase subunit alpha-2 (Na ⁺)/K ⁺ ATPase alpha-2 subunit) Sodium pump subunit alpha-2 ATP1A2 KIAA0778
Observed MW:	97-100 kDa
Uniprot ID :	P50993

Application

Reactivity:	Human, Mouse, Rat
Tested Application:	ELISA, WB, IHC, IF, FC
Recommended dilution:	WB: 1:500-1:2000; IHC: 1:20-1:200; IF: 1:20-1:200
Image:	



Immunohistochemistry of paraffin-embedded human skin using FNab00693(ATP1A2 antibody) at dilution of 1:100



HEK-293 cells were subjected to SDS PAGE followed by western blot with FNab00693(ATP1A2 antibody) at dilution of 1:1200