

ATP13A1 antibody

Product Information

Catalog No.:	FNab00690
Size:	100µg
Form:	liquid
Purification:	Immunogen affinity purified
Purity:	≥95% as determined by SDS-PAGE
Host:	Rabbit
Clonality:	polyclonal
Clone ID:	None
IsoType:	IgG
Storage:	PBS with 0.02% sodium azide and 50% glycerol pH 7.3, -20°C for 12 months(Avoid repeated freeze / thaw cycles.)

Background

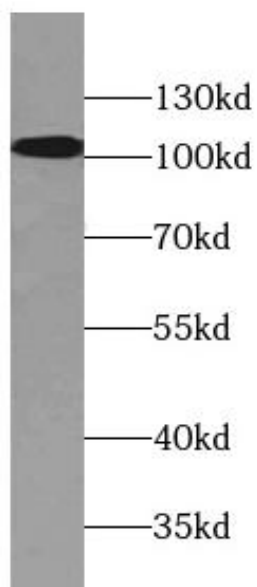
Mediates manganese transport into the endoplasmic reticulum. The ATPase activity is required for cellular manganese homeostasis.

Immunogen information

Immunogen:	ATPase type 13A1
Synonyms:	Endoplasmic reticulum transmembrane helix translocase Endoplasmic reticulum P5A-ATPase ATP13A1 ATP13A KIAA1825
Observed MW:	109 kDa
Uniprot ID :	Q9HD20

Application

Reactivity:	Human, Mouse, Rat
Tested Application:	ELISA, WB, IF
Recommended dilution:	WB: 1:1000-1:4000; IF: 1:20-1:200
Image:	



human liver tissue were subjected to SDS PAGE followed by western blot with FNab00690(ATP13A1 antibody) at dilution of 1:500