

ATG4D antibody

Product Information

Catalog No.:	FNab00676
Size:	100µg
Form:	liquid
Purification:	Immunogen affinity purified
Purity:	≥95% as determined by SDS-PAGE
Host:	Rabbit
Clonality:	polyclonal
Clone ID:	None
IsoType:	IgG
Storage:	PBS with 0.02% sodium azide and 50% glycerol pH 7.3, -20°C for 12 months(Avoid repeated freeze / thaw cycles.)

Background

Cysteine protease ATG4D: Cysteine protease required for the cytoplasm to vacuole transport(Cvt) and autophagy. Cleaves the C-terminal amino acid of ATG8 family proteins MAP1LC3 and GABARAPL2, to reveal a C-terminal glycine. Exposure of the glycine at the C-terminus is essential for ATG8 proteins conjugation to phosphatidylethanolamine(PE) and insertion to membranes, which is necessary for autophagy. Has also an activity of delipidating enzyme for the PE-conjugated forms. Cysteine protease ATG4D, mitochondrial: Plays a role as an autophagy regulator that links mitochondrial dysfunction with apoptosis. The mitochondrial import of ATG4D during cellular stress and differentiation may play important roles in the regulation of mitochondrial physiology, ROS, mitophagy and cell viability.

Immunogen information

Immunogen:	ATG4 autophagy related 4 homolog D
Synonyms:	Cysteine protease ATG4D AUT-like 4 cysteine endopeptidase Autophagy-related cysteine endopeptidase 4 (Autophagin-4) Autophagy-related protein 4 homolog D (HsAPG4D) Cysteine protease ATG4D, mitochondrial ATG4D APG4D AUTL4
Observed MW:	53 kDa
Uniprot ID :	Q86TL0

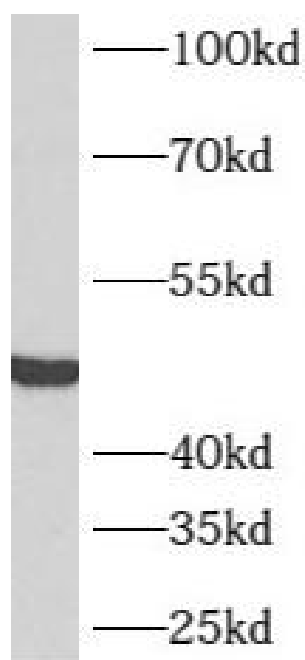
Application

Reactivity: Human, Mouse, Rat

Tested Application: ELISA, WB

Recommended dilution: WB: 1:500-1:1000

Image:



mouse heart tissue were subjected to SDS PAGE followed by western blot with FNab00676(ATG4D antibody) at dilution of 1:500