

ATG16L2 antibody

Product Information

Catalog No.:	FNab00670
Size:	100µg
Form:	liquid
Purification:	Immunogen affinity purified
Purity:	≥95% as determined by SDS-PAGE
Host:	Rabbit
Clonality:	polyclonal
Clone ID:	None
IsoType:	IgG
Storage:	PBS with 0.02% sodium azide and 50% glycerol pH 7.3, -20°C for 12 months(Avoid repeated freeze / thaw cycles.)

Background

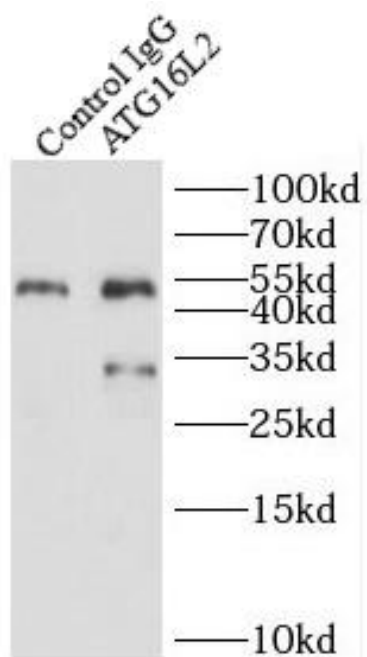
ATG16L2 also named as Autophagy related protein 16-2 is a 619 amino-acid protein, Which belongs to the WD repeat ATG16 family. ATG16L2 contains 7 WD repeats and localizes in the cytoplasm. There are three isoforms of ATG16L2 and the molecular weight of three isoform is respectively 69kDa, 56kDa and 31kDa. ATG16L2 may play a role in autophagy.

Immunogen information

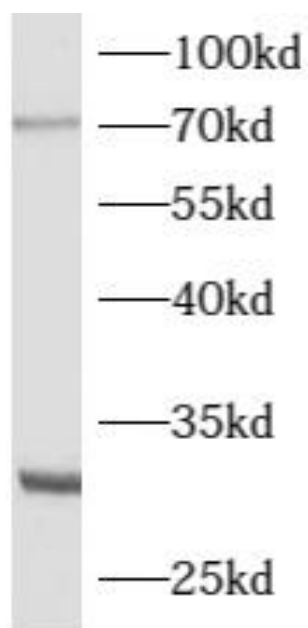
Immunogen:	ATG16 autophagy related 16-like 2
Synonyms:	Protein Atg16l2 APG16-like 2 Autophagy-related protein 16-2 WD repeat-containing protein 80 ATG16L2 WDR80
Observed MW:	70 kDa, 30 kDa
Uniprot ID :	Q8NAA4

Application

Reactivity:	Human, Mouse
Tested Application:	ELISA, WB, IP, IF
Recommended dilution:	WB: 1:500-1:2000; IP: 1:500-1:1000; IF: 1:50-1:500
Image:	



IP Result of anti-ATG16L2 (IP:FNab00670, 3ug;
Detection:FNab00670 1:700) with mouse testis
tissue lysate 4800ug



mouse testis tissue were subjected to SDS PAGE
followed by western blot with
FNab00670(ATG16L2 Antibody) at dilution of
1:1000