

ASRGL1 antibody

Product Information

Catalog No.:	FNab00648
Size:	100µg
Form:	liquid
Purification:	Immunogen affinity purified
Purity:	≥95% as determined by SDS-PAGE
Host:	Rabbit
Clonality:	polyclonal
Clone ID:	None
IsoType:	IgG
Storage:	PBS with 0.02% sodium azide and 50% glycerol pH 7.3, -20°C for 12 months(Avoid repeated freeze / thaw cycles.)

Background

Has both L-asparaginase and beta-aspartyl peptidase activity. May be involved in the production of L-aspartate, which can act as an excitatory neurotransmitter in some brain regions. Is highly active with L-Asp beta-methyl ester. Besides, has catalytic activity toward beta-aspartyl dipeptides and their methyl esters, including beta-L-Asp-L-Phe, beta-L-Asp-L-Phe methyl ester(aspartame), beta-L-Asp-L-Ala, beta-L-Asp-L-Leu and beta-L-Asp-L-Lys. Does not have aspartylglucosaminidase activity and is inactive toward GlcNAc-L-Asn. Likewise, has no activity toward glutamine.

Immunogen information

Immunogen:	asparaginase like 1
Synonyms:	Isoaspartyl peptidase/L-asparaginase Asparaginase-like protein 1 Beta-aspartyl-peptidase Isoaspartyl dipeptidase L-asparagine amidohydrolase Isoaspartyl peptidase/L-asparaginase alpha chain Isoaspartyl peptidase/L-asparaginase beta chain ASRGL1 ALP CRASH
Observed MW:	32 kDa
Uniprot ID :	Q7L266

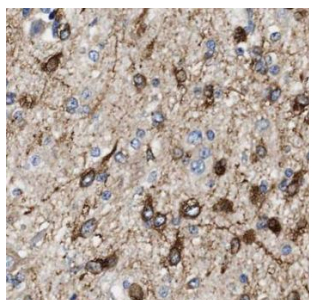
Application

Reactivity:	Human, Mouse, Rat
-------------	-------------------

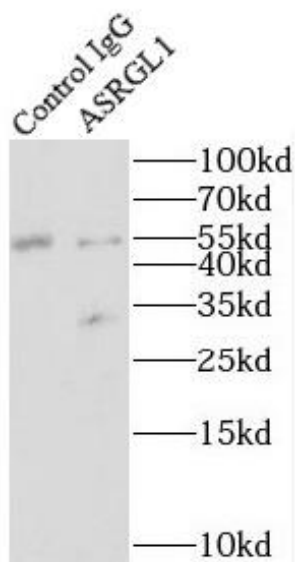
Tested Application: ELISA, WB, IHC, IP, IF

Recommended dilution: WB: 1:500-1:2000; IP: 1:500-1:1000; IHC: 1:20-1:200; IF: 1:50-1:500

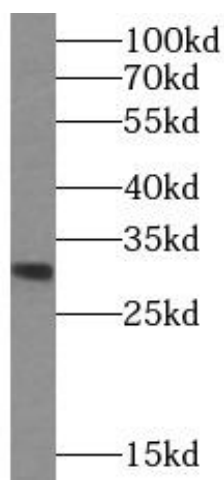
Image:



Immunohistochemistry of paraffin-embedded human gliomas using FNab00648(ASRGL1 antibody) at dilution of 1:50



IP Result of anti-ASRGL1 (IP:FNab00648, 4ug; Detection:FNab00648 1:500) with HeLa cells lysate 3200ug.



HeLa cells were subjected to SDS PAGE followed by western blot with FNab00648(ASRGL1 antibody) at dilution of 1:500