

ASPRV1 antibody

Product Information

| | |
|---------------|--|
| Catalog No.: | FNab00647 |
| Size: | 100µg |
| Form: | liquid |
| Purification: | Immunogen affinity purified |
| Purity: | ≥95% as determined by SDS-PAGE |
| Host: | Rabbit |
| Clonality: | polyclonal |
| Clone ID: | None |
| IsoType: | IgG |
| Storage: | PBS with 0.02% sodium azide and 50% glycerol pH 7.3, -20°C for 12 months(Avoid repeated freeze / thaw cycles.) |

Background

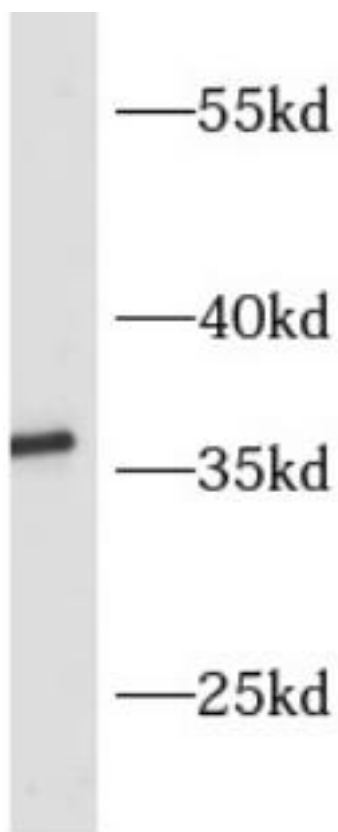
None

Immunogen information

| | |
|--------------|---|
| Immunogen: | aspartic peptidase, retroviral-like 1 |
| Synonyms: | Retroviral-like aspartic protease 1 Skin-specific retroviral-like aspartic protease (SASPase, Skin aspartic protease) TPA-inducible aspartic proteinase-like protein (TAPS) ASPRV1 SASP |
| Observed MW: | 28 kDa, 37 kDa |
| Uniprot ID : | Q53RT3 |

Application

| | |
|---------------------------|-------------------|
| Reactivity: | Human, Mouse, Rat |
| Tested Application: | ELISA, WB |
| Recommended dilution: WB: | 1:500-1:2000 |
| Image: | |



mouse brain tissue were subjected to SDS PAGE followed by western blot with FNab00647(ASPRV1 antibody) at dilution of 1:100