

ASH2L antibody

Product Information

Catalog No.:	FNab00637
Size:	100µg
Form:	liquid
Purification:	Immunogen affinity purified
Purity:	≥95% as determined by SDS-PAGE
Host:	Rabbit
Clonality:	polyclonal
Clone ID:	None
IsoType:	IgG
Storage:	PBS with 0.02% sodium azide and 50% glycerol pH 7.3, -20°C for 12 months(Avoid repeated freeze / thaw cycles.)

Background

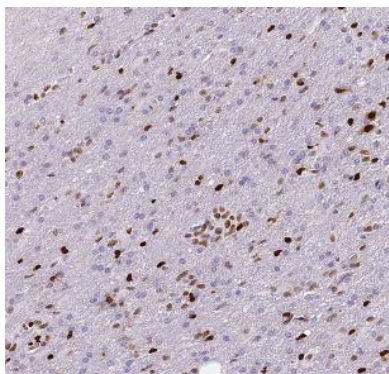
Component of the Set1/Ash2 histone methyltransferase(HMT) complex, a complex that specifically methylates 'Lys-4' of histone H3, but not if the neighboring 'Lys-9' residue is already methylated. As part of the MLL1/MLL complex it is involved in methylation and dimethylation at 'Lys-4' of histone H3. May function as a transcriptional regulator. May play a role in hematopoiesis.

Immunogen information

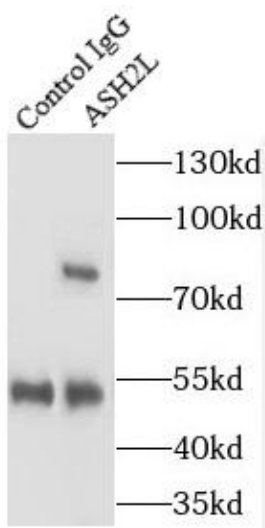
Immunogen:	ash2(absent, small, or homeotic)-like(Drosophila)
Synonyms:	Set1/Ash2 histone methyltransferase complex subunit ASH2 ASH2-like protein ASH2L ASH2L1
Observed MW:	80 kDa
Uniprot ID :	Q9UBL3

Application

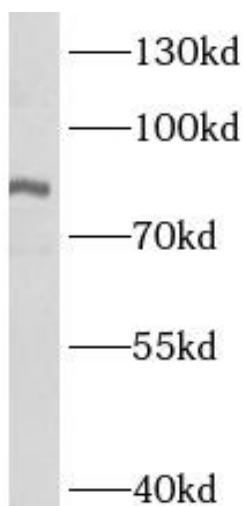
Reactivity:	Human, Mouse, Rat, Monkey
Tested Application:	ELISA, WB, IHC, IP
Recommended dilution:	WB: 1:500-1:2000; IP: 1:500-1:2000 ; IHC: 1:20-1:200
Image:	



Immunohistochemistry of paraffin-embedded human gliomas using FNab00637(ASH2L antibody) at dilution of 1:50



IP Result of anti-ASH2L (IP:FNab00637, 4ug; Detection:FNab00637 1:500) with COLO 320 cells lysate 2000ug.



COS-7 cells were subjected to SDS PAGE followed by western blot with FNab00637(ASH2L antibody) at dilution of 1:1000