

AP3S2 antibody

Product Information

Catalog No.:	FNab00468
Size:	100µg
Form:	liquid
Purification:	Immunogen affinity purified
Purity:	≥95% as determined by SDS-PAGE
Host:	Rabbit
Clonality:	polyclonal
Clone ID:	None
IsoType:	IgG
Storage:	PBS with 0.02% sodium azide and 50% glycerol pH 7.3, -20°C for 12 months(Avoid repeated freeze / thaw cycles.)

Background

Part of the AP-3 complex, an adaptor-related complex which is not clathrin-associated. The complex is associated with the Golgi region as well as more peripheral structures. It facilitates the budding of vesicles from the Golgi membrane and may be directly involved in trafficking to lysosomes. In concert with the BLOC-1 complex, AP-3 is required to target cargos into vesicles assembled at cell bodies for delivery into neurites and nerve terminals.

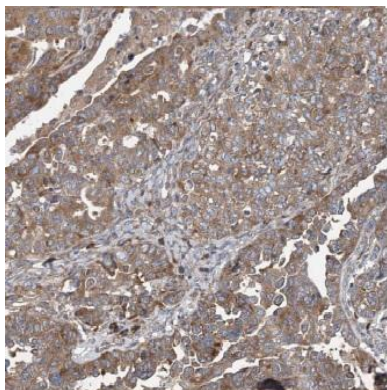
Immunogen information

Immunogen:	adaptor-related protein complex 3, sigma 2 subunit
Synonyms:	AP-3 complex subunit sigma-2 AP-3 complex subunit sigma-3B Adaptor-related protein complex 3 subunit sigma-2 Sigma-3B-adaptin (Sigma3B-adaptin) Sigma-adaptin 3b AP3S2
Observed MW:	22 kDa
Uniprot ID :	P59780

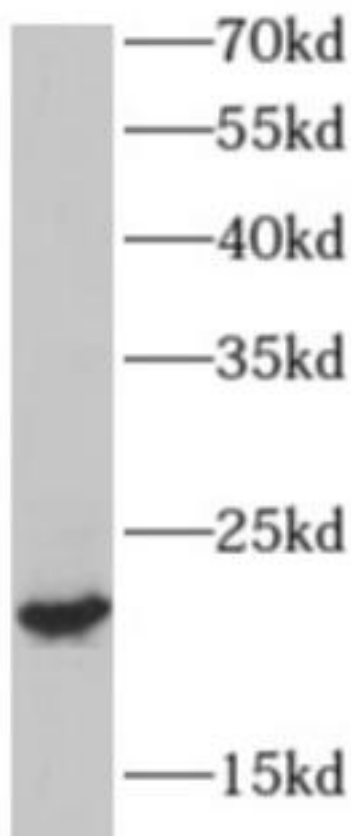
Application

Reactivity:	Human, Mouse, Rat
Tested Application:	ELISA, WB, IHC
Recommended dilution:	WB: 1:500-1:2000; IHC: 1:20-1:200

Image:



Immunohistochemistry of paraffin-embedded human ovary tumor using FNaB00468(AP3S2 antibody) at dilution of 1:100



human testis tissue were subjected to SDS PAGE followed by western blot with FNaB00468(AP3S2 antibody) at dilution of 1:800