

AP1B1 antibody

Product Information

Catalog No.:	FNab00457
Size:	100μg
Form:	liquid
Purification:	Immunogen affinity purified
Purity:	≥95% as determined by SDS-PAGE
Host:	Rabbit
Clonality:	polyclonal
Clone ID:	None
IsoType:	IgG
Storage:	PBS with 0.02% sodium azide and 50% glycerol pH 7.3, -20°C for 12 months(Avoid repeated freeze / thaw cycles.)

Background

Subunit of clathrin-associated adaptor protein complex 1 that plays a role in protein sorting in the late-Golgi/trans-Golgi network(TGN) and/or endosomes. The AP complexes mediate both the recruitment of clathrin to membranes and the recognition of sorting signals within the cytosolic tails of transmembrane cargo molecules.

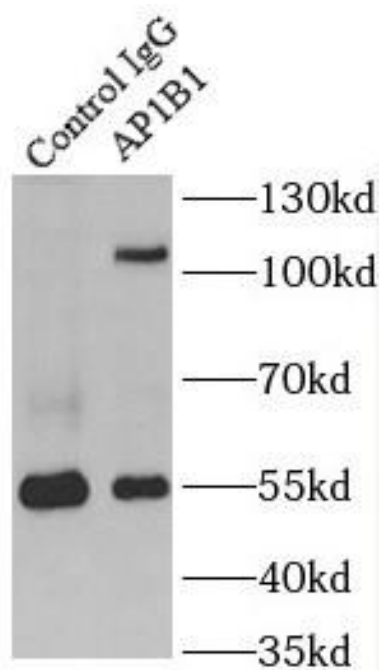
Immunogen information

Immunogen:	adaptor-related protein complex 1, beta 1 subunit
Synonyms:	AP-1 complex subunit beta-1 Adaptor protein complex AP-1 subunit beta-1 Adaptor-related protein complex 1 subunit beta-1 Beta-1-adaptin Beta-adaptin 1 Clathrin assembly protein complex 1 beta large chain Golgi adaptor HA1/AP1 adaptin beta subunit AP1B1 ADTB1 BAM22 CLAPB2
Observed MW:	101 kDa
Uniprot ID :	Q10567

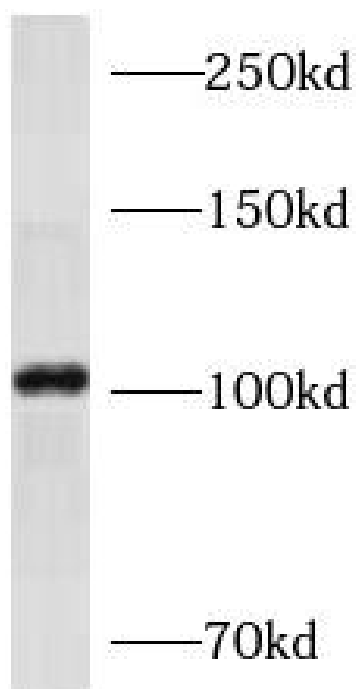
Application

Reactivity:	Human, Mouse, Rat
Tested Application:	ELISA, WB, IF, IP
Recommended dilution:	WB: 1:500-1:5000 ; IP: 1:200-1:2000 ; IF: 1:10-1:100

Image:



IP result of anti-AP1B1(IP:FNab00457, 4ug;
Detection:FNab00457 1:300) with HEK-293 cells
lysate 2320 ug



HEK-293 cells were subjected to SDS PAGE
followed by western blot with FNab00457(AP1B1
antibody) at dilution of 1:1000