

AMY2B antibody

Product Information

Catalog No.:	FNab00381
Size:	100µg
Form:	liquid
Purification:	Immunogen affinity purified
Purity:	≥95% as determined by SDS-PAGE
Host:	Rabbit
Clonality:	polyclonal
Clone ID:	None
IsoType:	IgG
Storage:	PBS with 0.02% sodium azide and 50% glycerol pH 7.3, -20°C for 12 months(Avoid repeated freeze / thaw cycles.)

Background

AMY2B(alpha-amylase 2B) belongs to the glycosyl hydrolase 13 family. This protein is involved in the endohydrolysis of 1,4-alpha-glucosidic linkages in oligosaccharides and polysaccharides. The full length 58 kDa protein has a signal peptide with 15 amino acids. Human amylases(Amy1, Amy2A, and Amy2B) commonly have two potential N-glycosylation sites(N427 and N476) in their C-terminal region(S Takashima, J Amano, 2012). This antibody can recognize both AMY2A and AMY2B.

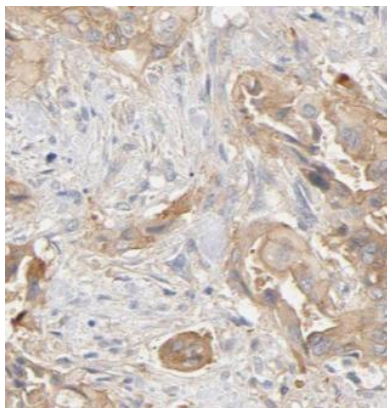
Immunogen information

Immunogen:	amylase, alpha 2B(pancreatic)
Synonyms:	Alpha-amylase 2B 1,4-alpha-D-glucan glucanohydrolase 2B Carcinoid alpha-amylase AMY2B
Observed MW:	58 kDa
Uniprot ID :	P19961

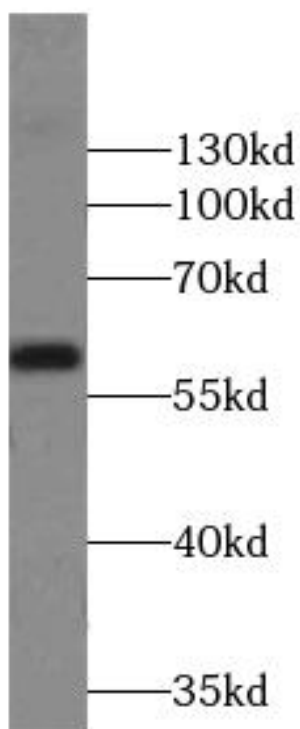
Application

Reactivity:	Human, Mouse, Rat
Tested Application:	ELISA, WB, IHC
Recommended dilution:	WB: 1:200-1:2000; IHC: 1:20-1:200

Image:



Immunohistochemistry of paraffin-embedded human pancreas cancer using FNab00381(AMY2B antibody) at dilution of 1:50



mouse skeletal muscle tissue were subjected to SDS PAGE followed by western blot with FNab00381(AMY2B antibody) at dilution of 1:400