

AREG antibody

Product Information

Catalog No.:	FNab00374
Size:	100µg
Form:	liquid
Purification:	Immunogen affinity purified
Purity:	≥95% as determined by SDS-PAGE
Host:	Rabbit
Clonality:	polyclonal
Clone ID:	None
IsoType:	IgG
Storage:	PBS with 0.02% sodium azide and 50% glycerol pH 7.3, -20°C for 12 months(Avoid repeated freeze / thaw cycles.)

Background

Amphiregulin(AREG) is one of the ligands of the epidermal growth factor receptor(EGFR). AREG plays a central role in mammary gland development and branching morphogenesis in organs and is expressed both in physiological and in cancerous tissues. The AREG protein is synthesized as a 252-amino acid transmembrane precursor, pro-AREG. At the plasma membrane, pro-AREG is subjected to sequential proteolytic cleavages within its ectodomain and is then released as the soluble AREG protein. Depending on the cell type and microenvironment, AREG can be produced in multiple cellular and mature forms using alternative pro-AREG cleavage sites and glycosylation motifs. Post-translational modifications of 50-kDa pro-AREG produces a major soluble 43-kDa form, 28-, 26-, 16-kDa membrane anchored forms, and soluble 21-, 19-, and 9-kDa forms(PMID: 9642297).

Immunogen information

Immunogen:	amphiregulin
Synonyms:	Amphiregulin (AR) Colorectum cell-derived growth factor (CRDGF) AREG AREGB SDGF
Observed MW:	43 kDa
Uniprot ID :	P15514

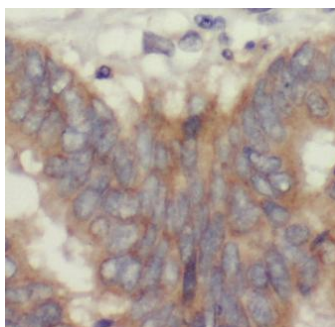
Application

Reactivity:	Human
-------------	-------

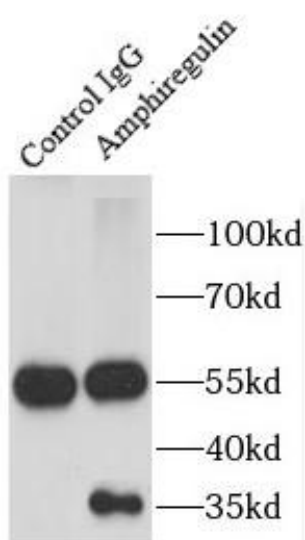
Tested Application: ELISA, IF, WB, IHC, IP

Recommended dilution: WB: 1:200-1:2000; IHC: 1:50-1:500; IP: 1:1000-1:10000; IF: 1:10-1:100

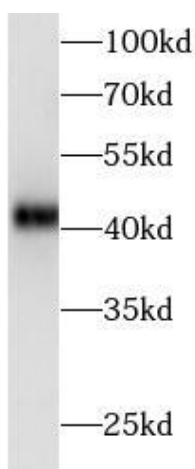
Image:



Immunohistochemistry of paraffin-embedded human colon cancer tissue slide using FNab00374(AREG Antibody) at dilution of 1:200. heat mediated antigen retrieved with Tris-EDTA buffer(pH9).



IP Result of anti-Amphiregulin (IP:FNab00374, 4ug; Detection:FNab00374 1:2000) with HepG2 cells lysate 3600ug.



MCF-7 cells were subjected to SDS PAGE followed by western blot with FNab00374(AREG Antibody) at dilution of 1:600