

ALPG antibody

Product Information

Catalog No.:	FNab00348
Size:	100µg
Form:	liquid
Purification:	Immunogen affinity purified
Purity:	≥95% as determined by SDS-PAGE
Host:	Rabbit
Clonality:	polyclonal
Clone ID:	None
IsoType:	IgG
Storage:	PBS with 0.02% sodium azide and 50% glycerol pH 7.3, -20°C for 12 months(Avoid repeated freeze / thaw cycles.)

Background

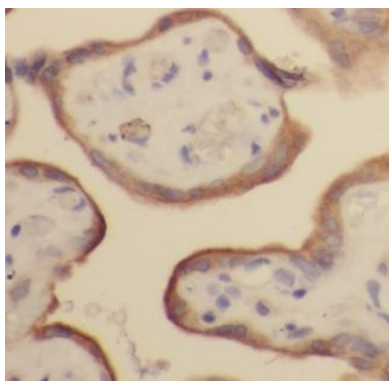
None

Immunogen information

Immunogen:	alkaline phosphatase, placental-like 2
Synonyms:	Alkaline phosphatase, germ cell type ALP-1 Alkaline phosphatase Nagao isozyme Alkaline phosphatase, placental-like Germ cell alkaline phosphatase (GCAP) Placental alkaline phosphatase-like (PLAP-like) ALPG ALPPL ALPPL2
Observed MW:	57 kDa
Uniprot ID :	P10696

Application

Reactivity:	Human, Mouse, Rat
Tested Application:	ELISA, IHC
Recommended dilution:	IHC: 1:20-1:200
Image:	



Immunohistochemistry of paraffin-embedded human placenta tissue slide using FNab00348(ALPPL2 Antibody) at dilution of 1:200