

## SERPINF2 antibody

### Product Information

Catalog No.:	FNab00339
Size:	100µg
Form:	liquid
Purification:	Immunogen affinity purified
Purity:	≥95% as determined by SDS-PAGE
Host:	Rabbit
Clonality:	polyclonal
Clone ID:	None
IsoType:	IgG
Storage:	PBS with 0.02% sodium azide and 50% glycerol pH 7.3, -20°C for 12 months(Avoid repeated freeze / thaw cycles.)

### Background

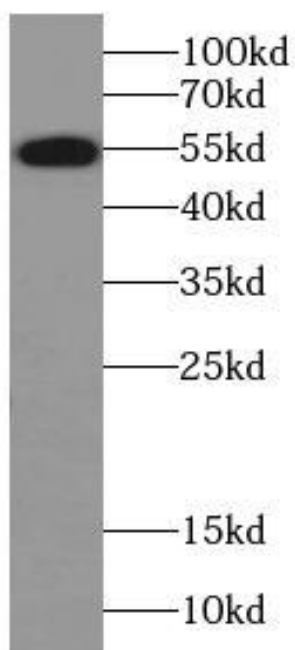
None

### Immunogen information

Immunogen:	serpin peptidase inhibitor, clade F(alpha-2 antiplasmin, pigment epithelium derived factor), member 2
Synonyms:	Alpha-2-antiplasmin (Alpha-2-AP) Alpha-2-plasmin inhibitor (Alpha-2-PI) Serpine F2 SERPINF2 AAP PLI
Observed MW:	54 kDa
Uniprot ID :	P08697

### Application

Reactivity:	Human, Mouse, Rat
Tested Application:	ELISA, WB
Recommended dilution:WB:	1:500-1:2000
Image:	



human liver tissue were subjected to SDS PAGE followed by western blot with FNab00339(SERPINF2 antibody) at dilution of 1:500