

ACTC1-specific antibody

Product Information

Catalog No.:	FNab00326
Size:	100µg
Form:	liquid
Purification:	Protein A+G purification
Purity:	≥95% as determined by SDS-PAGE
Host:	Mouse
Clonality:	monoclonal
Clone ID:	1A1
IsoType:	IgG1
Storage:	PBS with 0.02% sodium azide and 50% glycerol pH 7.3, -20°C for 12 months(Avoid repeated freeze / thaw cycles.)

Background

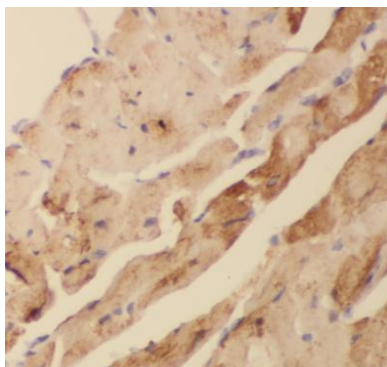
Actins are highly conserved proteins that are involved in various types of cell motility and are ubiquitously expressed in all eukaryotic cells. The ACTC1 gene encodes cardiac muscle alpha-actin, the predominant actin isoform in adult heart, which interacts with a variety of proteins to produce the force for muscle contraction. This antibody is specific to the ACTC1. It does not cross-react with other actin isoforms.

Immunogen information

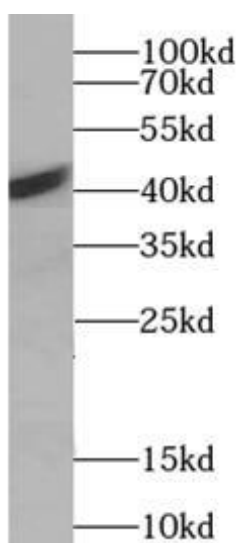
Immunogen:	actin, alpha, cardiac muscle 1
Synonyms:	Actin, alpha cardiac muscle 1 Alpha-cardiac actin Actin, alpha cardiac muscle 1, intermediate form ACTC1 ACTC
Observed MW:	42 kDa
Uniprot ID :	P68032

Application

Reactivity:	Human, Mouse, Rat
Tested Application:	ELISA, WB, IHC, IF
Recommended dilution:	WB: 1:2000-1:10000; IHC: 1:100-1:400; IF: 1:50-1:500
Image:	



Immunohistochemistry of paraffin-embedded human heart using FNab00326(Actin cardiac actin-Specific antibody) at dilution of 1:100



human heart tissue were subjected to SDS PAGE followed by western blot with FNab00326(Actin cardiac actin-Specific antibody) at dilution of 1:5000