

ALDH6A1 antibody

Product Information

Catalog No.:	FNab00298
Size:	100µg
Form:	liquid
Purification:	Immunogen affinity purified
Purity:	≥95% as determined by SDS-PAGE
Host:	Rabbit
Clonality:	polyclonal
Clone ID:	None
IsoType:	IgG
Storage:	PBS with 0.02% sodium azide and 50% glycerol pH 7.3, -20°C for 12 months(Avoid repeated freeze / thaw cycles.)

Background

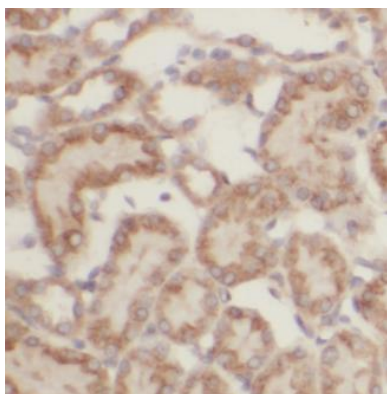
Plays a role in valine and pyrimidine metabolism. Binds fatty acyl-CoA.

Immunogen information

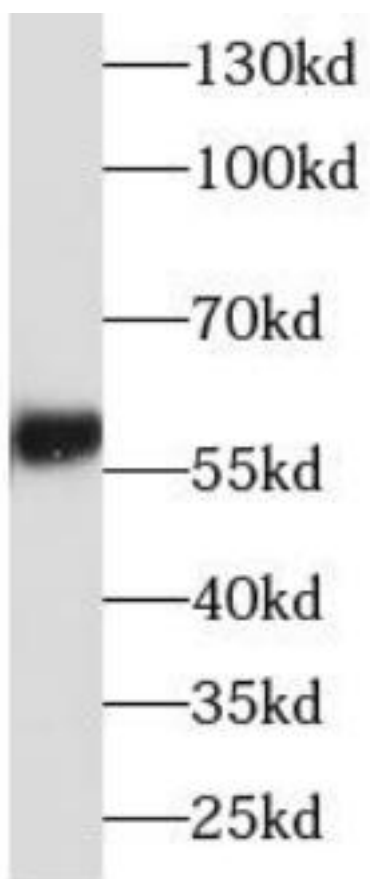
Immunogen:	aldehyde dehydrogenase 6 family, member A1
Synonyms:	Methylmalonate-semialdehyde/malonate-semialdehyde dehydrogenase [acylating], mitochondrial (MMSDH) Aldehyde dehydrogenase family 6 member A1 Malonate-semialdehyde dehydrogenase [acylating] ALDH6A1 MMSDH
Observed MW:	58 kDa
Uniprot ID :	Q02252

Application

Reactivity:	Human, Mouse, Rat
Tested Application:	ELISA, WB, IHC
Recommended dilution:	WB: 1:2000-1:10000; IHC: 1:50-1:500
Image:	



Immunohistochemistry of paraffin-embedded human kidney using FNab00298(ALDH6A1 antibody) at dilution of 1:50



HEK293 cells were subjected to SDS PAGE followed by western blot with FNab00298(ALDH6A1 antibody) at dilution of 1:5000