

ALDH1L2 antibody

Product Information

Catalog No.:	FNab00290
Size:	100µg
Form:	liquid
Purification:	Immunogen affinity purified
Purity:	≥95% as determined by SDS-PAGE
Host:	Rabbit
Clonality:	polyclonal
Clone ID:	None
IsoType:	IgG
Storage:	PBS with 0.02% sodium azide and 50% glycerol pH 7.3, -20°C for 12 months(Avoid repeated freeze / thaw cycles.)

Background

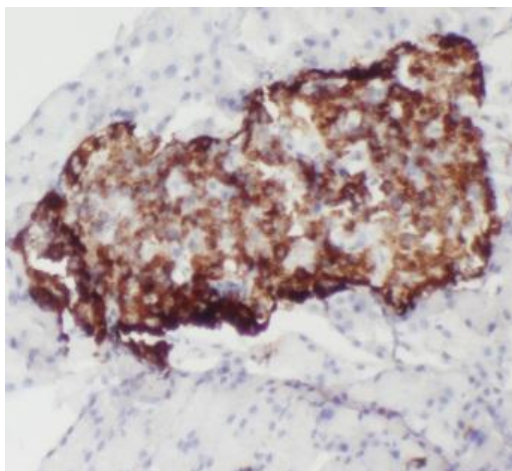
ALDH1L2(Aldehyde dehydrogenase family 1 member L2) is also named as mitochondrial 10-FTHFDH, mtFDH and belongs to the aldehyde dehydrogenase family and ALDH1L subfamily. The ALDH1L2 gene has three transcriptional variants with the molecular weight of 102 kDa, 42 kDa and 89 kDa(PMID:19823103).

Immunogen information

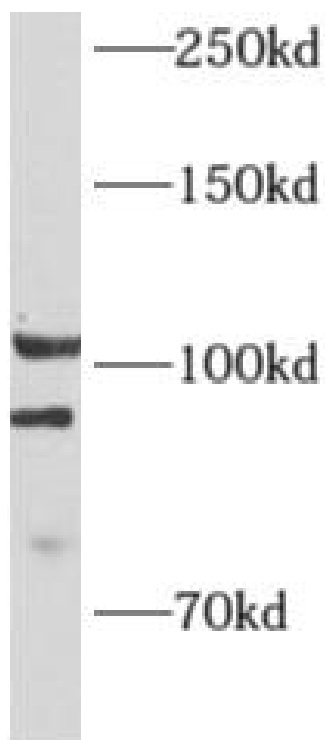
Immunogen:	aldehyde dehydrogenase 1 family, member L2
Synonyms:	Mitochondrial 10-formyltetrahydrofolate dehydrogenase (Mitochondrial 10-FTHFDH, mtFDH) Aldehyde dehydrogenase family 1 member L2 ALDH1L2
Observed MW:	102 kDa and 89 kDa
Uniprot ID :	Q3SY69

Application

Reactivity:	Human, Mouse
Tested Application:	ELISA, WB, IHC
Recommended dilution:	WB: 1:200-1:2000; IHC: 1:20-1:200
Image:	



Immunohistochemistry of paraffin-embedded human pancreas slide using FNab00290(ALDH1L2 Antibody) at dilution of 1:50



mouse kidney tissue were subjected to SDS PAGE followed by western blot with FNab00290(ALDH1L2 antibody) at dilution of 1:1000